

## News

Clubs mark 30 glorious years



## Features

New installation from London artist Kate Terry



## Events

Check out the best winter and spring events and activities



# WE'RE ON THE MOVE!

## Goldsmith Centre to be transformed as Foundation moves to town centre

**The Heritage Foundation has received planning permission to transform the former North Herts College at the Goldsmith Centre into its new offices and community hub.**

The building will now undergo significant improvement and modification. Teaching spaces will be transformed into offices, meeting rooms and community spaces, bringing together many of the Foundation's services under one roof.

Graham Fisher, Chief Executive of the Foundation, said: "This is an exciting opportunity as it will mean the Foundation will be back in the town centre, making it easier for the community to reach us. We will be closer to many of our venues and services, including the Broadway Cinema, Theatre

and Gallery, and the Community Museum. It will also boost the local economy by bringing more people into the centre of town."

Although the Foundation owns the freehold to the Goldsmith building, we are buying the lease from North Herts College, who vacated the building last year.

We will move from our current office on Icknield Way, which has been a base for many of our staff since 2011.

Keep an eye on the Foundation's website and on social media for further updates.

## NEW YEAR, NEW NAME, NEW LOOK!

We've given our newsletter a new name and a bit of a makeover so we can include more news, updates and photos about what's happening across the community. We hope you like it.

## Green light for Wilbury hillfort bid

Last summer we reported that we were backing a £1m bid to carry out an archaeological study of an Iron Age hillfort at Wilbury to learn

more about life in Letchworth 2,500 years ago.

Just in time for this edition, we received news from the Chiltern Conservation Board that

their bid to the Heritage Lottery Fund has been successful, with the project expected to get underway later this year.

The project will see further studies being carried out on the site close to Fearnhill School, which was once home to a small community who lived in roundhouses.

Annette Venters, People and Society Officer at the Chilterns Conservation Board, commented: "We are absolutely delighted to secure funding from the Heritage Lottery

Fund for this exciting project. We look forward to working with our partners including the Letchworth Garden City Heritage Foundation, to discover more about the ancient landscapes and Iron Age hillforts of the Chilterns, including the Wilbury Hillfort, and to inspire local people and families to get involved. The project will bring the Iron Age to life and help us conserve these special places for the long-term."

Sign up to our e-newsletter for further updates at [letchworth.com/enews](http://letchworth.com/enews)



## On your bike!

We're working with transport advisers to look at how we can improve Letchworth's cycling network.

Existing roads and paths have already been reviewed by Transition Town Letchworth and we are now working with our advisers and local groups to highlight where improvements need to be made.

The project got underway with members of the local community joining our advisers, our Chief Executive Graham Fisher, along with the County Council, to carry out a cycling audit.

The findings from this will help develop proposals for improvements to the cycling network.



## NEW NURSERY OPENS

Our Chairman Colin Chatfield recently opened a new nursery on Black Horse Lane. Enchanted Nursery caters for children aged 0-5 years in this newly-built unit, which includes outside

playgrounds, a sensory room, dining area and kitchen with freshly cooked meals daily for the children. Find out more at [enchanteddaynursery.co.uk](http://enchanteddaynursery.co.uk)

Colin Chatfield pictured with Clair Davison, Director of Enchanted Nursery



## A GREAT BRITISH RAILWAY JOURNEY TO LETCHWORTH

Back in July, our Town Historian Josh Tidy spent the day filming with Michael Portillo for the new series of Great British Railway Journeys.



Mt Portillo was keen to hear about Letchworth's history and its influence on the Garden City Movement around the world.

The episode featuring Letchworth is due to be aired on BBC 2 in January.

## Clubs mark 30 glorious years with special events

1987 will be remembered for many things: it was the year Terry Waite was taken hostage in the Middle East; Rick Astley was riding high in the charts, and Michael Fish told us not to worry about \*that\* storm.

But there were more important events closer to home, as it was the year when two much-loved Letchworth groups were founded, and late last year they joined forces for a special birthday celebration.

Members from **The Letchworth Arts and Leisure Group** and **Letchworth Film Club** came together to mark their 30<sup>th</sup> anniversaries at Broadway Cinema with a screening of the 1987 classic *Raising Arizona*.

Also celebrating 30 years were the organisers of the **Standalone 10k**. Starting as a fun offshoot from the Letchworth half-marathon, the



event has gone from strength to strength and is now firmly part of the Letchworth events calendar. This year's event was the biggest yet, attracting more than 1,300 runners from across the region.

Here's to many more years of success for all these clubs.



## WHO'S NEW AT THE FOUNDATION

**Beth Dawes**  
Marketing Manager,  
Leisure Portfolio



Beth is the new Marketing Manager for the Foundation's leisure portfolio, looking after Broadway Cinema & Theatre, Broadway Studio & Gallery and Standalone Farm.

Her marketing career has included roles in publishing and higher education but now she's happy to be working in her hometown and no longer commuting to London.

Beth works with staff at the venues to get the word out about forthcoming events, from upcoming film and theatre shows, to exhibitions and holiday events at the Farm.

**Andy Parish**  
Technical Manager



Andy joins us as Technical Manager at Broadway Theatre following an exciting career as a stage manager with touring theatre productions, concerts and West End shows. In his most recent role he was Operations Manager and, before that, he was the superbly titled Performer Flying Director for a rigging company, working on numerous film and television productions and live events.

Andy's role is to look after the technical requirements of visiting touring companies.

**Matthew Peak**  
Finance Director



Our new Finance Director is Matt Peak who has previously worked in the social housing sector and the NHS. He is also a non-executive board member for Suffolk Housing Society.

Matt has overall responsibility for the leadership of the finance team and for promoting good financial management across the Foundation.

## Get down to the Farm earlier than ever before!

Rather than the usual March opening, the Farm will now open on **Saturday 10 February**, with a week packed with special activities. As well as saying hello to all the animals, families can enjoy games, crafts, a quiz trail, Farm iSpY, and all the regular feeding and milking demonstrations that continue throughout the year.

The team is particularly looking forward to a Kids' Press Conference on **Tuesday 13 February** – a chance for your children to ask our farmer Andrew everything they would like to know about Standalone Farm. No question is too difficult and afterwards, they can create a front page for 'The Standalone Times'.

The season's opening week is the perfect time to buy an annual pass for the Farm (£75 for 2 adults and up to 3 children) giving you entry to the Farm and includes all events for a year. Day tickets cost £24 for a family, or £5.50 children/£7 adults.



Fans of Standalone Farm will be happy to hear that the team is busy working behind the scenes to open early in 2018, just in time for February half term!

# Meet our new Governors

We are delighted to welcome three new Nominated Governors who were put forward by local groups and clubs.



**Richard Harbon**  
(Recreation and Other Activities)

Richard is a well-known face around Letchworth and North Herts as the president of North Herts Road Runners and a former Chief Inspector with Hertfordshire Constabulary.

He's not one to stand still for too long – when he's not organising the 10k, he's busy working with the Foundation and Active Letchworth on the annual *Run Around the Garden* event in the town centre and the Greenway Challenge. He is also a fundraiser for the Garden House Hospice.

**Richard says:**

“These events and activities encourage the community to get active and boost their general wellbeing. They also support the Heritage Foundation's strategic plan to ensure the town is vibrant, while supporting the social fabric of the town.”



**Kevin Jones**  
(Preservation of the Environment)

Kevin is an electronic engineer and management consultant whose career has ranged from designing and patenting electronic systems to advising public sector bodies on technology deployment. He is a Council Member of the Letchworth Garden City Society and a Trustee of Transition Town Letchworth. If that's not enough to keep him busy, he plays the piano and organ, and sings bass in a chamber choir in Cambridge.

**Kevin says:**

“I have been interested in sustainable living for more than 20 years and have been delighted to see green technologies moving in that time from the experimental stage to widespread availability. My interest in the preservation of Letchworth's environment includes both the built and the natural environment. I am keen to combine respect for our heritage with a major reduction in fossil fuel use.”



**Gareth Hiller**  
(Social Welfare and the Relief of Poverty)

Gareth is a law graduate with several years' experience across health and social care roles. He has worked at a strategic level in a number of national charities and is currently the Programme Lead for technological integration between health and social care in Hertfordshire and West Essex. As a non-executive, Gareth is the Vice-Chairman of Howard Cottage Housing Association.

**Gareth says:**

“I have lived and worked in and around Hertfordshire my whole life. I have a particular affinity with Letchworth because of its status as the world's first Garden City and my role at Howard Cottage. Our organisations are intrinsically and historically linked and I'm keen to use my skills and experience to further the prospects and sustainability of Letchworth for the next generation.”

## And welcome to our new General Governors

**John Coling**

John has worked in construction for more than 10 years and is a Member of the Royal Institute of Chartered Surveyors (MRICS). He has a broad range of skills and knowledge in commercial and residential property management as well as sustainable development that he believes will support the work and values of the Foundation. In his spare time he plays rugby and squash and enjoys cycling and running around the Greenway.

John says: “Since moving to Letchworth Garden City in 2015 I have grown to love this town. I'm delighted to be part of the organisation that is responsible for managing its special assets and uniqueness for future generations to enjoy.”



**Simon Franklin**

Simon has worked in nuclear energy for more than 25 years and is a member of the Nuclear Institute. He brings a wealth of knowledge in strategic planning and assurance as well as customer engagement.



Simons says: “My family and I moved to Letchworth eight years ago and have immersed ourselves in all aspects of the Garden City, especially its vibrant arts and cultural scene. I am particularly interested in Letchworth's journey in the next 50 years and how it can become a sustainable Garden City with good quality, affordable homes. I'm keen to explore how we can work with the community to ignite the passion that filled Letchworth in those early years through its people, spaces and buildings.”

## Questions & Answers with Tilini Sharland General Governor



**We spoke to one of our General Governors, Tilini Sharland, about why she became a Governor and the work she has been involved with. Tilini lives in Letchworth with her husband and two young children and works in Central Government in London.**

**Why did you apply to become a Governor?**

I watched an episode of *Who Do You Think You Are?* which depicted the story of Ebenezer Howard and I was inspired to become more involved with a place I have fallen in love with – Letchworth Garden City, my own little utopia.

**What work have you become involved with since becoming a Governor?**

I have had the honour and privilege of working on some fascinating and significant projects, particularly in relation to young people and families in our town. I have thoroughly enjoyed working with the dedicated and friendly staff at the Foundation and with my fellow Governors, who have a wealth of knowledge and experience. Since becoming a Governor I've also consulted with schools, family support staff, children's centres and other charities and organisations.

**What is the most rewarding aspect of being a Governor?**

For me it is about the amazing Five Year Plan that we have for the town and it is deeply rewarding to be able to make a difference to people's lives, to listen to them, learn from them and enrich the lives of those living in this very special place.

**If somebody was thinking about applying, what words of encouragement would you offer?**

I would encourage anyone to get involved and apply to be a Governor regardless of age, background or profession. When I applied, I did a bit of inward thinking about the skills and qualities that I have, my particular selling points and potential solutions to various issues in our town as we evolve and continually improve. You may wish to think about what motivates you as a person; what are you passionate about and why? What are the potential solutions to the issues you see? How could things be better for the next generation?

## Would you like to be a Foundation Governor?

During 2018 we will be looking for new Governors to join us. Keep an eye on our website for more information or sign up for our monthly e-newsletter via [letchworth.com/enews](http://letchworth.com/enews)

Elizabeth Towler  
Environmental Landscape  
Manager



## NORTON POND UPDATE

The second stage of the Norton Pond development works took place during November and December. We're now preparing the banks of the pond for planting locally sourced native aquatic plants to provide a rich egg-laying habitat.



## ORCHARD PLANTING PROGRAMME GETS UNDERWAY

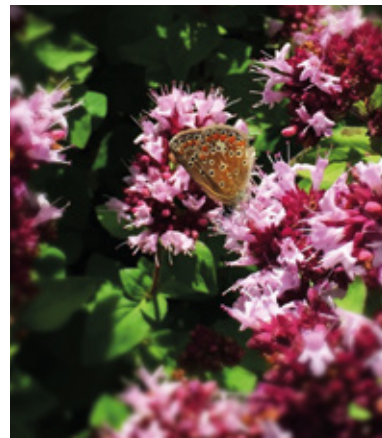
Our Landscaping Team has a busy few weeks ahead as a new planting programme gets underway at Croft Lane Orchard. This will include 115 new apple trees, 12 new native trees around the periphery to boost wildlife, 100 metres of boundary hedging and a wild flower area to encourage pollinating insects including bees.

## Butterflies thriving at Hillbrow

Wildlife Trust member, Roger Millard, tells us that he has identified no less than 15 different species of butterfly just 200 metres from the southern edge of the Greenway at Hillbrow.

Among those spotted last summer were peacocks, red admirals, small skippers and gatekeepers.

Great news for butterflies and nature lovers!



## Watch out fly-tippers, our cameras are about

We are using technology to help us crack down on the huge increase in fly-tipping around the Garden City.

Working in partnership with North Herts District Council, we have installed cameras at key sites around the town to catch fly-tippers in the act.

The number of cases being reported has quadrupled since 2016 with a particular increase in building and hard landscaping waste being dumped at beauty spots and industrial areas around the town. We have even had hazardous chemicals dumped at Wymondley Wood.

The cost of the clear-up has run into thousands of pounds which could have been spent improving the quality of life for residents. This is why we are working together to clamp down on the problem, using technology to target problem areas so we can catch those responsible and bring them to justice.

If you witness fly-tipping in progress please report it to the police on 999. Alternatively, you can report incidents to the Council using the 'Do it Online facility' on our website.

## Did you know?

**If you are having work done to your house, garden or driveway, it's your responsibility to ensure that your contractor is a registered waste carrier.**

If waste is traced back to your property, you could face prosecution by the Council or the Environment Agency, not your contractor.

You can check the Environment Agency's website for a list of registered waste carriers – [environment-agency.gov.uk](http://environment-agency.gov.uk)



David Ames  
Head of Strategic  
Planning and  
Development



## Local Plan Public Examination

The Local Plan Examination will run until **Thursday 1 March**.

The full schedule, along with all the examination documents, are available on the North Herts District Council's website – [north-herts.gov.uk](http://north-herts.gov.uk)

We will shortly be sharing our plans about how the community can get involved with our discussions on the proposed new housing.

## Run a business from home?

If you run a business from home, you may need a licence under the terms of the covenants on your property whether you are a freeholder or a leaseholder.

Applying for a licence is easy – simply contact the team at the Heritage Advisory Centre to find out more about how to make an application. You can call in to the Centre on Station Road during business hours from Monday to Friday, or call **01462 476017**.

## Modernising Letchworth's older homes

**As part of our ongoing work on how to modernise and improve the energy efficiency of some of the town's older properties, our property and landscaping teams have been working together to update a property on the historic Glebe Road.**

The aim of the project was to renovate the house, improve its efficiency and make it a comfortable living space while protecting its historic characteristics, before renting it out to a local family.

One of the main changes was the addition of new energy-efficient windows in keeping with the style of the home. These are the same windows used on the Eco Home project last year.

The old UPVC front door has also been replaced with one that is more in keeping with the style of the house and it's even more energy efficient.

Other changes to the property included the installation of a new energy-efficient boiler, as well as a complete redecoration of the interior to freshen up the house. The exterior was also repainted, the roof had a major overhaul and the gutters cleared of debris.



The work continued outside with a makeover of the garden areas. One of the key elements of the design was to reduce the 100% concrete hardstanding as required in our Design Principles. The team wanted to show that it's possible to have room for a garden or planted area along with a parking space.

The driveway is a permeable surface, which, combined with the surrounding garden area, allows water to drain into the ground and prevent rain run-off into the road and potential flooding.

The planting in the gardens was designed to be low maintenance, wildlife-friendly, attractive, diverse and colourful. The plants were chosen to have a longer flowering period to give pollinators, especially bees, the food sources they require throughout the year. This also has the knock-on effect of keeping the garden looking good all season.

The finishing touch for the garden was a large feature tree, a rowan, which provides flowers in spring for the bees, berries in the autumn for the birds and autumn colour in the garden for everyone else.

Now that everything has been completed, the family have settled into their new home which really stands out as an example of how to renovate traditional Letchworth properties.

We have plenty of guidance on making the most of your garden on our website and you can learn more about the requirements for hardstandings when altering your home in our Design Principles. Copies are also available from the Heritage Advisory Centre or online at [letchworth.com](http://letchworth.com)

# Celebrating Broadway Theatre's First Year

It's almost a year since the curtain went up on the Broadway Theatre stage for the very first time and what a year it's been!

“

Seeing live theatre is a thrilling experience and I'm delighted that it's now available in Letchworth.

**In 2017, more than 40 performers and theatre companies came to Broadway, including monsters, dinosaurs and Snark-hunters; Ruby Wax, Michael Morpurgo and Andy Parsons; even Santa dropped by!**

Reflecting on the first year in operation, Broadway Theatre's Creative Programmer Sue Scott Davison commented: "What a year it has been. I'd like to thank everyone who came to see our shows and supported us over the past 12 months. I'm very much looking forward to making our next 12 months even more successful. Seeing live theatre is a thrilling experience and I'm delighted that it's now available in Letchworth."

Sue continued: "The first year was all about providing something for everyone, so we had a hugely varied programme of drama, family shows, comedy and live music. It's been fantastic to see local people who have been coming to see films and event cinema for years, now enjoying top quality theatre performed in their hometown."

2018 will have just as much to offer. The *Horrible Histories* team is back by popular demand, with a new show; Pam Ayres will delight with her witty, wicked rhymes; Rich Hall will bring his trademark dry American comedy; and the kids will be spellbound by *I Believe in Unicorns*, *The Jungle Book* and much more.



Tickets for the new season are **NOW ON SALE**. You can pick up a brochure from the Cinema & Theatre for details of all the new shows, or view at [broadway-leitchworth.com](http://broadway-leitchworth.com)



## We're top in the country for event cinema

“

We like to give our audiences the VIP treatment...

**Our programme of event cinema was a runaway success in 2017, with Broadway Cinema frequently ranked within the top 5 for independent cinemas in the country (based on ticket sales) – scooping the top spot for the Royal Opera House's October screening of *Alice's Adventures in Wonderland*.**

Throughout the year we were in the top five for *La Bohème*, *The Magic Flute*, *Yerma*, *Peter Pan* and *Anthony & Cleopatra*; and in the top 10 for *John Le Carré* and *Otello*.

Event cinema is a special experience, with productions from the world's top stages (such as the Royal Opera House, National Theatre and MET Opera) screened live into cinemas. At Broadway the experience is made all the more special, with complimentary drinks and other little extras.

Jason Valentine, Venue Manager at Broadway Cinema & Theatre, commented: "Event cinema at



Broadway has gone from strength to strength and it's great to be able to screen world-class opera, ballet and theatre in Letchworth. We like to give our audiences the VIP treatment and I'm thrilled they're enjoying the experience."

Tickets for the 2018 event cinema are **now on sale** – full details at [broadway-leitchworth.com](http://broadway-leitchworth.com)

### KIDS CLUB

Don't forget our regular Kids Club screenings on Saturday and Sunday mornings. Tickets are just £1 per person. Book ahead to avoid disappointment!

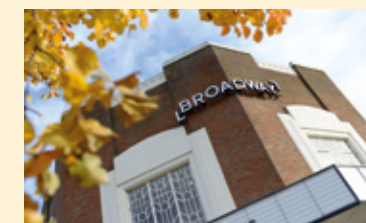


## LEITCHWORTH FILM CLUB BRINGS CLASSICS AND WORLD CINEMA

Celebrating their 30<sup>th</sup> birthday last year, Letchworth Film Club is run by volunteers, all of whom enjoy watching modern and classic films from across the world in an informal atmosphere. Films are screened one Sunday a month (usually the first) at 7.45pm.

### WHAT'S ON?

- *Manhattan* **4 February**
- *Anomalisa* **4 March**
- *Sonita* **8 April** (Farsi with English subtitles)
- *After Love* **22 April** (French with English subtitles)
- *The Measure of a Man* **13 May** (French with English subtitles)
- *Behemoth* **2 June** (Chinese with English subtitles)



# A System of Parallels

From early February Broadway Gallery will be hosting an installation by London artist Kate Terry entitled *A System of Parallels*. Terry's practice includes sculpture, installation and drawing, with her forthcoming installation utilising thread, wood and other materials.

**The Broadway Gallery's Visual Arts Curator Laura Dennis meets artist Kate Terry.**

**Hello Kate! What will you be exhibiting at Broadway Gallery?**

I'm building a site-specific thread installation, made up of hundreds of lines of coloured thread in intersecting forms. I will also be showing a collection of sculptures and a series of drawings.

**How would you describe yourself as an artist?**

In my practice I explore architectural space, geometry, balance, and colour.

I come from a background in sculpture and all of my work is very much grounded in ideas around sculpture. I have three overlapping areas of my practice, which are installations, sculptures and drawings. My thread installations operate a bit like drawings in space, and hover somewhere in between sculpture and drawing.

The sculptures in the new exhibition will include a range of geometric shapes, predominately made in wood. Circles feature heavily, as a nod to Letchworth having the UK's first roundabout.

**How do you make your work?**

I make drawings and sculptures in my studio and workshop, and I make site-specific installations directly in galleries and other spaces – as I will at Broadway Gallery. I enjoy working on-site, and responding to the architecture and idiosyncrasies of each space and considering how a viewer moves around or through my work.



I'll do a site-visit and test out a few ideas in a gallery before making a model of the space, and make drawings to plan out the configurations of my installation. But often the final form of the work takes place in the space.

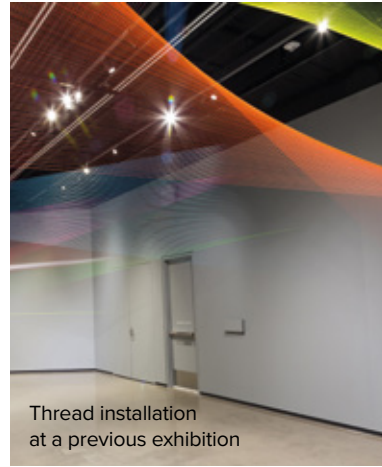
**How will your installation at Broadway Gallery be different from what you have created before?**

I've started to work with brass as an additional material in my sculptures recently and this will be the first time I will show works using brass. I'm really drawn to its seductive shininess but also its brittleness, which is quite different to the flexibility of my threads. I also haven't shown all three aspects of my practice together in this way before, so I'm excited to see the overlaps and conversations between the works.

**What do you find interesting about Letchworth Garden City?**

I'm fascinated by the idea of newness and idealism in the original founding of the Garden City and the socialist principles that the town was founded on. I am very interested in architecture and I love the drawings for the initial town plans, the radial plan, the shapes of the buildings and road structures within these plans. And the black squirrels, of course.

See Kate's installation *A System of Parallels* at the Broadway Gallery from 9 February to 22 April.



Thread installation at a previous exhibition

## LAST CHANCE TO SEE Letchworth pop art pioneer

**Time is running out to see the current exhibition at the Broadway Gallery, Gordon House: Paint to Print, which runs until 28 January.**

This is another exhibition with a strong Letchworth link. Instrumental in the rise of the British Pop Art scene, Gordon House grew up in Letchworth and studied with his contemporary Richard Smith, another acclaimed Letchworth artist. This exhibition centres on a series of his paintings and prints from the 1960s, an era when House made significant contributions to contemporary painting and printmaking, and worked on album covers for musicians including The Beatles.

**The Broadway Gallery and Café Bar are open Wednesday to Saturday between 10am and 5pm, and on Sundays between 10am and 4pm.**

# Exhibition and book to celebrate 'unsung hero' of Arts & Crafts Movement

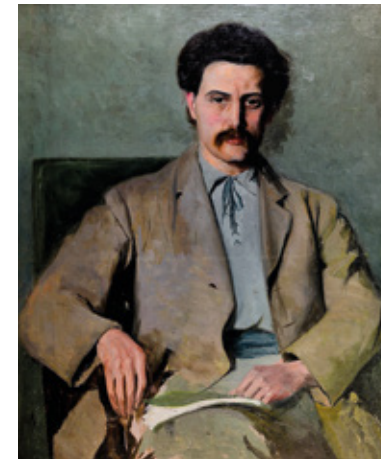
**The Garden City Collection is teaming up with Broadway Gallery to host an exhibition celebrating the life and work of an unsung hero of the Arts & Crafts Movement.**

Barry Parker, along with his business partner Raymond Unwin, created the template for the Garden Cities model around the world, but his influence on architecture globally is less well known. Parker believed passionately that architecture and thoughtful planning of community spaces could change lives – Letchworth Garden City was his masterpiece and his home for more than 40 years.

This first major exhibition on Parker will consider his ideology of equality and democracy and his harmonious approach to design, confirming his importance as one of the most important British architects of the twentieth century.

“His ethos focused on harmony, sunlight and equality...”

Curator of the Garden City Collection Vicky Axell believes his centenary is the right time to re-examine his huge contribution to architecture. “Parker hasn't enjoyed the same level of recognition as some of his peers,” she said. “He is an undiscovered genius of the Arts & Crafts Movement who had a unique approach to architecture with a big social conscience. He believed in building homes for all regardless of their wealth and social status in society. His ethos focused on harmony, sunlight and equality, which meant that the homes he designed were functional and beautiful, filled with light, affordable and fitted into the surrounding environment. Put simply, he wanted to create decent places for people to live: architecture for all.”



The exhibition will showcase some of the 4,500 historical objects from the Parker Collection, featuring architectural plans and drawings, photographs, furniture and fine art.

To coincide with the exhibition, Vicky and her colleagues have written a book entitled *Barry Parker 1867-1947, Architecture of Harmony, Sunlight and Quality*, based on research by Dr Mervyn Miller. Featuring more than 200 images from the Garden City Collection, the book is a celebration of the archive held at the Collection's Study Centre. It also explores his private work and social housing projects in the UK and abroad where he planned towns in Brazil and Portugal.

A series of events will run as part of the celebration, so keep an eye on our website and on social media. Following this, a touring exhibition will visit other places designed by Parker to further highlight his place in architectural history.



## GET INVOLVED

**DO YOU LIVE IN A HOME DESIGNED BY BARRY PARKER? IF SO, WE NEED YOUR PHOTOS!**

The team at the Collection wants to create a comprehensive record of Parker's Letchworth roots by compiling a series of images showing the interior and exterior of Parker houses in Letchworth. This could be photos of the entire house or a favourite feature such as door latches, fireplaces or other details. If you live in a house designed by Parker, whether it's a small cottage or a larger detached house, we want to hear from you.

All the images collected will be displayed at the exhibition. Get in touch by calling **01462 476075** or email **gcc@letchworth.com**

## NEW BOOK CAPTURES LETCHWORTH'S ARTS & CRAFTS HERITAGE

Letchworth Garden City's rich Arts & Crafts heritage has been brought to life in a new book by Town Historian Josh Tidy and Aimee Flack from the Garden City Collection.

**Arts & Crafts in Letchworth** is packed with images from the archives of the Garden City Collection featuring architecture, interiors, textiles, ceramics and industry.

The book is available to purchase from the Tourist Information Centre on Station Road and is priced at £15.



# Looking back on the

It has been a year of excitement and change for the Foundation. We opened the doors of our new theatre space at the Broadway Cinema, welcomed our new Chief Executive on board, and showcased international artists at the Broadway Gallery.

**Here's a snapshot of the year that was 2017:**

## JANUARY

We started the New Year by announcing Graham Fisher as our new Chief Executive, joining us later in the year from social justice charity Toynbee Hall.

A programme of works began on Norton Pond to enhance the habitat for local wildlife and transform the appearance of the pond.

## FEBRUARY

After a £3.8m refurbishment, Broadway Cinema became Broadway Cinema & Theatre, with a professional stage added to Screen One.

Season One featured big names such as author and broadcaster Gyles Brandreth and children's author Michael Morpurgo.

## MARCH

Artist Dan Hays dazzled us with his homage to Letchworth in his exhibition *The Walk to the Paradise Garden*, featuring a series of new paintings of Letchworth landmarks, one of which is on permanent display at the Broadway Cinema & Theatre.

The Community Transport Association presented us with a new community minibus to take local people to social groups and medical appointments.



## APRIL

We awarded a grant to help preserve Letchworth's oldest (and smallest) church, which needed urgent repairs. The Liberal Catholic Church, located on the corner of Norton Way South and Meadow Way, was built in 1923 and is now a building of special interest.

## MAY

A series of free Gardening Masterclasses got underway to encourage the community to get involved with gardening.

Our Ernest Gardiner Treatment Centre was inspected by the Care Quality Commission, receiving a positive report recognising the dedication of the team and services provided.

## JUNE

The dedication and hard work of our volunteers at the Garden City Collection was recognised at a special event organised by Museums East.

As part of the Letchworth Festival, Broadway Theatre opened its doors to showcase the best local talent with 11 shows over two weeks.

Our new Chief Executive updated the community about progress with our work at the annual Garden City Meeting, which took place at the Spirella Ballroom.



## JULY

An interactive exhibition celebrating the sights, sounds and smells of Letchworth's shopping past opened at the Community Museum, attracting more than 1,175 visitors.

We appointed Mark Coles as our new Head of Property to oversee our local property portfolio.

Our grants programme supported Letchworth student Alex Bush with her trip to Turkey where she represented Team GB in the Deaflympics.



## AUGUST

Outdoor Cinema was back with a sunset screening of the Oscar-winning *La La Land*.

BBC Four came to Letchworth to film a documentary on the ideas, inspirations and visionaries behind the concept of Utopia, with one episode dedicated to Letchworth.

## SEPTEMBER

LALG and Letchworth Film Festival joined forces for a joint celebration at Broadway Cinema to mark their respective 30<sup>th</sup> anniversaries (see page 3).

Greenway Day returned for a second year with more than 200 people turning out to take part in a series of activities and workshops at three routes along the 13.4 mile route around the Garden City. The events were organised by Active Letchworth in partnership with North Herts District Council and Stevenage Leisure Ltd.

# highlights of 2017

## OCTOBER

The spotlight was on Standalone Farm for the annual Standalone 10k, which attracted record numbers as it marked its 30<sup>th</sup> anniversary. The Farm also broke its own record for visitor numbers with more than 73,000 people coming through the door during the 2017 season.

Our landscaping team wrapped up a 12-month programme of work on the Greenway, which included resurfacing, replanting, car park improvements, repairing benches, tables and gates, and installing new dog bins around the route.

## NOVEMBER

Our town historian Josh Tidy teamed up with Aimee Flack from the Garden City Collection to launch a new book on Letchworth's rich Arts & Crafts heritage.

We supported the Letchworth BID to attract more visitors to the town centre by funding the Christmas Lights Switch On.



## DECEMBER

We opened our Christmas shop and exhibition at the Community Museum, which was packed with historic displays and Arts & Crafts inspired gifts and souvenirs.

Graham Fisher  
Chief Executive



“ We will also be updating our forward plan and refreshing our priorities to reflect achievements and progress. This includes reviewing our popular and successful grants programme and building on the work we are doing to support families in the town.

# Looking forward to 2018

Despite a challenging and uncertain economic backdrop the year ahead is full of promise for the Foundation and the many people and partners that we work with and support.

We are all very excited at the prospect of the Foundation relocating to the town centre at the Goldsmith Centre. This will bring together many of our services and teams as well as creating a vibrant community hub for Letchworth. At the time of writing this, the purchase has not yet completed, but it feels strongly certain. We are now beginning to plan our relocation anticipating a move date in late spring/early summer. We will be keeping you all updated via our website and newsletter.

Another highlight of the year will be our exhibition to celebrate the life, works and accomplishments of architect Barry Parker. This will be a really important opportunity to celebrate the work of one of the masters who created the wonderful legacy that is the Garden City today. An exhibition, book and talks are planned for mid-2018 onwards, which I know will be of great interest to everyone in the town, as well as drawing in visitors from further afield.

During my first six months, I have enjoyed meeting people from Letchworth's many clubs and societies as well as representatives from the local business community. This has helped me gain better insight into the challenges and opportunities for our Garden City and I look forward to continuing this dialogue with more groups and the business community in 2018.

We will also be updating our forward plan and refreshing our priorities to reflect achievements and progress. This includes reviewing our popular and successful grants programme and building on the work we are doing to support families in the town. Alongside this our arts, culture and community services will continue to flourish and build on what has been an incredibly successful 2017.

I am looking forward to an exciting year and I hope you are too.



The Goldsmith Centre



Wilbury Community Cafe



Tea and cakes at Wilbury Cafe

Clare Valentine  
Property Team Portfolio  
Manager



## NEW WINDOWS FOR EASTCHEAP PROPERTIES

We have recently completed a project of external redecoration and replacement of external windows to the upper floors of 13-29 Eastcheap. This work was part of a planned programme of investment in our property portfolio and the costs were fully funded by the Foundation.

The new windows are metal framed, double glazed units and will improve the thermal performance of the building as well as improving the external appearance of the street scene.

## New car park for commuters

We have reopened the former car park at Plinston Hall aimed at commuters and long stay visitors.

The newly-named Broadway Gardens Car Park has spaces for up to 58 cars and costs £4 per day or £16 per week. This is good news for Letchworth workers, commuters and shoppers as we are able to offer lower daily and weekly rates right in the town centre and close to the train station. This should also help ease parking on some residential streets.

# It's all happening down Eastcheap

## A STEP IN THE RIGHT DIRECTION FOR WALKWEL

**Last autumn, Walkwel, which specialises in podiatry, chiropody, specialist shoes and foot care products, moved to one of our bigger units on Eastcheap to allow the business to expand after 17 years on Leys Avenue.**

We visited our new tenants – Managing Director and Lead Podiatrist, Sangeeta Dhall, along with her Practice Manager Simon Bygrave – to have a look around, and we were very impressed with the new set-up.

There's no doubt about it, you certainly notice Walkwel's presence as you walk up Eastcheap with its display of colourful shoes and footwear. In addition to a well-stocked retail area selling a range of shoes and footwear products, this new clinic now has three therapy rooms and an exercise area. The team also includes a



remedial sports massage therapist, a beauty therapist, and a reflexologist, which means customers can access several different services and therapies under one roof.

As well as the services offered at the clinic, Walkwel provides a Home Visit Service and makes regular programmed calls to Care Homes and a local Drop-in Centre.

We wish Sangeeta and her team the very best for the future.



We're delighted to welcome Izzy Shoes to Eastcheap. With a fantastic range of affordable Italian leather shoes, this is a welcome addition to the town. Our Chief Executive Graham Fisher and Head of Property Mark Coles recently met with owner Katya Khalilova (pictured).

## Foundation staff raise £3000+ for Herts Mind Network

This year we have been raising money for Hertfordshire Mind Network. Our Board of Trustees agreed to match fund the first £2,000 raised, setting an ambitious target for the year. At the time of going to press we've smashed this target raising a grand total of £3,154.

Fundraising events have been both big and small: from cake sales and staff quizzes to sponsored sporting events and fundraising at the Broadway Theatre – most recently, Ruby Wax allowed us to fundraise at her *Frazzled* show, adding another £150 to the total.

All of our efforts are going towards the new Letchworth Wellbeing Centre on Broadway. We've already helped fund the set-up of their pre-weekend group, and more recently they have been using our donations to make their counselling rooms cosier and more comfortable.



## Counselling service for young boosted by Foundation Grant

**Young people in Letchworth will now have greater access to a professional counselling service thanks to a grant awarded to Tilehouse Counselling from the Heritage Foundation.**

Based in Hitchin, Tilehouse Counselling is a charity working with adults and young people aged 13+ across North Hertfordshire.

Across the UK, one in 10 children suffers from depression, anxiety or another diagnosable mental health problem. There's a growing need for counselling for young people, reflected locally by increasing waiting lists.

Tilehouse Director Sue Barnes explains: "Sadly our waiting lists have been increasing steadily over the past 12 months. Criteria for support under the Child and Adolescent Mental Health Services has changed significantly and many young people simply don't meet the eligibility thresholds for NHS support. We are keen to help these people before their issues develop further."

Sue and her team of counsellors provide a professional counselling service, working with issues such as anxiety, depression, gender identity, bullying, self-harming and

abuse. The service is confidential and non-judgmental.

"Put simply, we offer teenagers a space where they can talk without being judged," said Sue, "along with the time to work through problems and difficulties. For many we're the last option and the alternative doesn't bear thinking about."

At Tilehouse Counselling, services for children are free of charge and for those 19+ and in employment, an affordable contribution is asked for, starting at £16 per session for those on benefits or on a low income. In order to operate, the centre must fundraise or seek support from organisations such as the Foundation and Big Lottery.

"We're incredibly grateful to the Foundation for the grant, indeed we're thankful to all our supporters and Patrons," commented Sue. "It would be good if we could focus less on fundraising – allowing us to free up our time for our core activities, but we need a certain level of money to operate."

Our Head of Charitable Services Alastair Stewart commented: "We know from our work with Herts Mind Network that the number of mental health cases at Letchworth GP surgeries is higher than the

### Tilehouse Counselling

“We offer teenagers a space where they can talk without being judged...”

county average. We're delighted to be able to support this valuable service and hope our funding enables more young people of Letchworth to get the help they need."

If you or someone you know would like to learn more about the counselling available, call 01462 440244, send an email to [counselling@tilehouse.org](mailto:counselling@tilehouse.org) or visit the website – [www.tilehouse.org](http://www.tilehouse.org)



“For many we're the last option and the alternative doesn't bear thinking about.”

## Active Letchworth focuses on getting older adults moving

**In 2018 Active Letchworth will be working to encourage more adults to increase their activity levels, aiming to get more people in Letchworth moving.**

According to Sport England, more than one in four of us do fewer than 30 minutes of physical activity a week and a staggering one in six deaths is caused by inactivity. That's the same as smoking. Active Letchworth wants to make a positive difference and hope to help Letchworth residents to become more active.

Kicking off this January we will be looking at how best to do this, starting with focus groups with local residents in the town. We're aiming to set up a variety of programmes for people to join, which could include walking groups, yoga sessions, gardening and walking football.



More Positive Movement Classes

It doesn't matter if you've not played sport since PE at school – or even if you managed to wriggle out of it! This is a chance for everyone to make a positive difference to their health.

For more information email [active@lethworth.com](mailto:active@lethworth.com)

**active**  
Letchworth  
supporting community wellbeing

## DID YOU KNOW?

This year we've supported **58 different groups** within the town with grants totalling **£128,501**



# Questions & Answers with Remap



Bruce Carr, Chairman of Remap (North Herts)

**Remap is a national charity which helps people with disabilities achieve independence and a better quality of life. Earlier this year we supported the North Herts branch with a grant to help cover the costs of garage rental in Letchworth to store vital equipment and projects in development.**

We spoke with Bruce Carr, Chairman of Remap (North Herts) to find out more about the charity and their work within the town:

**Tell us more about Remap – what do you do?**

We're a charity that designs and manufactures practical equipment for the elderly and disabled where suitable commercial products are not available. So we might develop an attachment to allow someone in a wheelchair to go outside with their baby in a pram, modify a games console controller so it can be controlled by one hand, set up a voice controlled page turner for an e-reader, or develop a tool to help someone suffering with Parkinson's with their balance and mobility.

**Where are you based?**

Remap is a national organisation with some 100 local panels. We are the North Herts panel responsible for our own finances, raising our own funds and identifying and executing the work in this area.

**How much do items typically cost? And where can I buy them?**

All the equipment we supply is free of charge but we do welcome donations to cover the material costs. You can't buy the items we produce in shops: everything is bespoke.

**How does the process work?**

Typically we'll speak with a carer – be that a relative or someone from



Occupational Therapy – and get an understanding of the issue and then design and manufacture a solution. When we have a particularly difficult problem we may have a brainstorming session or look at what other panels have done – although we like to come up with our own ideas.

**Are you looking for additional volunteers?**

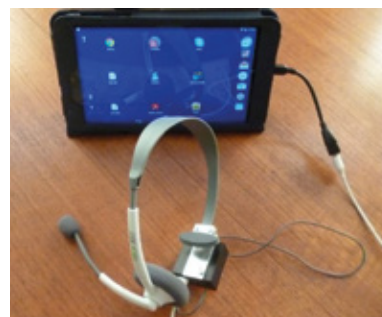
Yes! Remap volunteers work from their own garages and workshops using their ingenuity and skills to help people with disabilities achieve independence and enjoyment of life's opportunities. It's an incredibly rewarding volunteering role and I am sure that anyone who joined us would find it very fulfilling.

**If companies have materials that might be useful, how can they get in touch?**

Participation by local companies in our design and manufacture and supply of materials is much appreciated. If you are able to help in any way, contact me on **01462 673375** or email **nhremap@gmail.com**

**Do you need a referral to use your services?**

No, just get in touch with us and we'll see if we can help.



## Universal Credit (UC) will be rolled out for new claimants in Letchworth from June 2018

citizens advice

North Hertfordshire & District

We chatted to our friends at Citizens Advice about what it will mean for local people on benefits and they have compiled a list of **7 things you need to know:**

- 1 UC will bring together working-age benefits into one single payment, replacing six 'legacy benefits': income-based Jobseeker's Allowance, income-related Employment and Support Allowance, Income Support, Child Tax Credit, Working Tax Credit and Housing Benefit.
- 2 Most people will need to apply online and manage their claim online. You will therefore need to have access to the internet and, as you'll need to fill in forms, it will be easier to do this with a laptop or personal computer. Letchworth Library and the Job Centre have computers for public use.
- 3 UC will be paid into a bank account. If you don't have a bank or post office account, you should set one up now.
- 4 Most people will be paid once a month. You'll need to manage your budget to last you for the whole month. Set up a direct debit to pay out your rent, council tax and fuel. If you do not know how to set up a direct debit, talk to your bank.
- 5 If you're currently receiving any of the six legacy benefits and your circumstances do not change you will carry on receiving them as you do now until being moved onto UC sometime between July 2019 and March 2022. This is called **'managed migration'**.
- 6 However, if your circumstances change, you could have to claim UC from June 2018. This is called **'natural migration'**.
- 7 If you are part of the **'managed migration'** process you will get cash protection if your UC is less than what you got under the old system. This will be an extra amount to make up the difference between the old and the new. It will be fixed until your UC award overtakes your old benefit amount, but will end if your circumstances change. If you start to receive UC as a result of a change of circumstance (i.e. due to **'natural migration'**), you will not get transitional protection.



The team at Citizens Advice

## WHAT IS UNIVERSAL CREDIT?

Universal Credit replaces six means-tested benefits into one monthly payment for those out of work or on a low income.

For more information and to find out if you are eligible, visit [gov.uk/universal-credit](http://gov.uk/universal-credit)

For general advice visit Citizens Advice at 49 Station Road, Letchworth Garden City, Herts SG6 3BQ or call **03444 111 444** or visit [northhertscab.org.uk](http://northhertscab.org.uk)



Dr Susan Parham  
Academic Director at the  
International  
Garden Cities  
Institute



## ABOUT THE GARDEN CITIES INSTITUTE

The International Garden Cities Institute brings together knowledge on the hundreds of Garden Cities and planned settlements across the world to act as a resource centre, sharing information and exploring their historic legacy and contemporary practice.

It commissions research on all aspects of creating successful new settlements, including cultural and community aspects, master planning, building technologies, stewardship and financial models.

# PhD student to explore Letchworth's food economy

**We have appointed a new doctoral scholar, Amélie André, who is exploring the food economy in a Garden City context.**

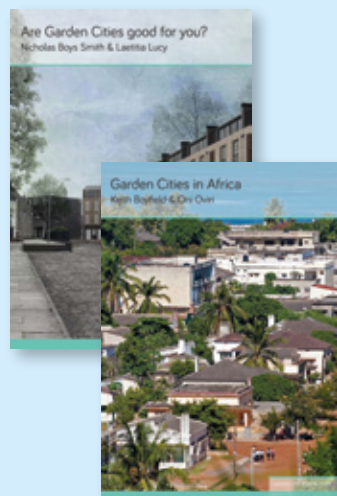
It is very pleasing to be able to congratulate Amélie on being awarded the studentship co-funded by the Hertfordshire Local Economic Partnership and the Foundation (as industry partner). I'm delighted to be her academic supervisor, along with my University of Hertfordshire colleague Professor David Barling, the Director of the Centre for Food, Agriculture and Environmental Management (CAFEM) at the University, and David Ames, Head of Strategic Planning and Development at the Heritage Foundation.

Over the next four years Amélie will be exploring very contemporary food economy issues in Letchworth Garden City. Her expert academic and professional background in architecture and working on community place-making projects will stand her in very good stead in undertaking this research.

Amélie is now starting her first year, which will have an applied 'Knowledge Transfer' focus so that any lessons learned can be made use of as quickly and practically as possible.

As noted in a recent International Garden Cities Institute blog, there is a lot of scope to explore in a highly applied way how Ebenezer Howard's localised food system ideas could be revived and adapted for 21<sup>st</sup> century conditions in Letchworth. The aim would be to generate economic benefits for a Garden City today and in the future, and there may well be wider applicability for other garden cities, garden villages, garden suburbs and new towns including those being planned now. There will be more details about the progress and findings from Amélie's work in the months to come.

To keep up to date on the work at the International Garden Cities Institute, visit [gardencitiesinstitute.com](http://gardencitiesinstitute.com)



## New papers published

Last year we launched our Garden City Perspectives Papers, with *Garden Cities – Why Not?*, which I wrote along with one of the Institute's founding partners, Keith Boyfield.

More recently, we published the second in the series, *Are Garden Cities Good for You?*. This latest paper was written by Nicholas Boys Smith and Laetitia Lucy of Create Streets, an urbanism practice focussing on delivering better quality housing through streetscapes.

Forthcoming papers include *Garden Cities in Africa* by Keith Boyfield, and *Garden Cities: Visionary, Popular and Viable?*, which I have written with Anthony Downs and Gavin Murray, (based on our highly-commended entry to the 2015 Wolfson Prize).

To download these latest publications visit [gardencitiesinstitute.com](http://gardencitiesinstitute.com)

## Garden City Collection

### Garden City Collection Events

The Collection is home to more than 250,000 artefacts on Letchworth's fascinating history. You can have your very own behind-the-scenes tour to see objects that tell the story of the world's first Garden City. You can join others on a general tour or arrange a private booking.



You can also browse 70,000 items illustrating Letchworth Garden City's unique history.

Keep an eye out for heritage events as part of the 2018 Letchworth Festival and Heritage Open Days.

### For information on our regular tours:

☎ 01462 476075  
✉ [gcc@lethworth.com](mailto:gcc@lethworth.com)  
🏠 [gardencitycollection.com](http://gardencitycollection.com)

### Or follow us

🐦 @GC\_Collection  
📘 /gardencitycollection

## The International Garden Cities Exhibition

### Guided Walking Tours

Third Saturday of every month at 10.30am, meeting at the Spirella Building.

### Dates for 2018

Saturday 20 January  
Saturday 17 February  
Saturday 17 March  
Saturday 21 April  
Saturday 19 May  
Saturday 16 June

Join one of Letchworth's Town Historians on a pleasant stroll through some of the highlights of the first Garden City's history. Our gentle walking route is punctuated with stops where we can dig deeper into the history of certain buildings.

Starting at the Spirella Building on Bridge Road this tour takes in Parks and Gardens, Arts & Crafts, Cheap Cottages, hidden gems, and a brief stop at The International Garden Cities Exhibition, where you can enjoy hot drinks and discover more about the history of Letchworth, Ebenezer Howard, and the Garden City Movement – and its legacy across the world.

The walking tour should take approximately 2½ to 3 hours.

You can park for free at The Spirella Building, with the car park accessible off Icknield Way.

There is a small amount of walking on grass/uneven ground – you should wear sensible footwear if possible.

Includes **free Fairtrade tea and coffee** at The International Garden Cities Exhibition halfway through the tour.



### Contact us

☎ 01462 476069  
✉ [garden-cities-exhibition@lethworth.com](mailto:garden-cities-exhibition@lethworth.com)  
🏠 [garden-cities-exhibition.com](http://garden-cities-exhibition.com)  
🐦 @garden\_cities

**UNTIL 28 JANUARY**  
BROADWAY GALLERY  
**Gordon House: Paint to Print**

An exhibition of paintings and prints by Gordon House, an influential artist and designer from Letchworth whose bold, abstract work helped define the 1960s cultural scene.

**23 JANUARY** 6.45pm  
BROADWAY CINEMA  
**Cezanne: Portraits of A Life**

Featuring interviews with curators and experts from the National Portrait Gallery London, MoMA New York and more, the film sheds light on an artist who is perhaps the least known of all the impressionists.  
*Tickets £11*

**27 JANUARY** 5.40pm  
BROADWAY CINEMA  
**Tosca**  
**THE METROPOLITAN OPERA**

Andris Nelsons conducts a new staging of Puccini's dramatic tragedy, directed by Sir David McVicar. Kristine Opolais and Jonas Kaufmann star as the heroine Tosca and her lover Cavaradossi, with Bryn Terfel as the villainous Scarpia.  
*Tickets £19*

**3 FEBRUARY** 7.30pm  
BROADWAY THEATRE  
**The Strange Case of Dr Jekyll & Mr Hyde**

A thrilling adaptation of Robert Louis Stevenson's dark psychological fantasy. Gripping, stylish and thought-provoking, this is unmissable theatre.  
*Tickets £16, Concessions £14*



**9 FEBRUARY – 22 APRIL**  
BROADWAY GALLERY  
**Kate Terry: A System of Parallels**

A solo exhibition by British artist Kate Terry, bringing together an installation of hundreds of coloured threads alongside new geometric sculptures and drawings.

**10 FEBRUARY**  
STANDALONE FARM  
Season Launch

**10 FEBRUARY** 7.30pm  
THE SPIRELLA BUILDING  
**Hansel & Gretel**  
**POP-UP-OPERA**

The most popular operatic fairy tale of them all. Pop-up Opera is an innovative touring opera company which aims to broaden the appeal of opera and to challenge the way opera is performed, by taking it into unusual spaces and making it intimate and engaging.  
*Tickets £20, Concessions £16*

**13 FEBRUARY** 1.30pm & 4.30pm  
BROADWAY THEATRE  
**Horrible Histories**  
**MORE BEST OF BARMY BRITAIN**

We all want to meet people from history. The trouble is everyone is dead! A new production of Horrible Histories featuring MORE of your favourite characters from our barmy past – and a brand new scene with wordy Will!  
*Tickets – Adult £15, Child £12, Family £48*

**14 FEBRUARY** 6.45pm  
BROADWAY CINEMA  
**Twelfth Night**  
**ROYAL SHAKESPEARE COMPANY**

Christopher Luscombe returns to tackle Shakespeare's greatest comedy, a brilliantly bittersweet account of "the whirligig of time", with Adrian Edmondson in the role of Malvolio and Kara Tointon in the role of Olivia.  
*Tickets £16*

**22 FEBRUARY** 6.45pm  
BROADWAY CINEMA  
**Cat On A Hot Tin Roof**  
**NATIONAL THEATRE LIVE**

Tennessee Williams' twentieth century masterpiece, brought to life in Benedict Andrews' thrilling revival starring Sienna Miller alongside Jack O'Connell and Colm Meaney.  
*Tickets £16*



**24 FEBRUARY** 5.15pm  
BROADWAY CINEMA  
**La Boheme**  
**THE METROPOLITAN OPERA**

An exciting young cast stars in Franco Zeffirelli's classic production of La Boheme, the most performed opera in MET history.  
*Tickets £19*

**28 February** 7pm  
BROADWAY CINEMA  
**The Winter's Tale**  
**ROYAL OPERA HOUSE**

Shakespeare's tale of love and loss becomes compelling dance drama in Christopher Wheeldon's ballet adaptation, with music by Joby Talbot.  
*Tickets £16*

**3 MARCH** 7.30pm  
BROADWAY THEATRE  
**Griff Rhys Jones: Where Was I?**

Join the star of Not the Nine o'clock News, Smith & Jones and Three Men In A Boat as he airs stories, anecdotes, reminiscences and outright lies – from forty years of travelling – down rivers and up mountains, into Africa, out of India, and across the arid wastes of the BBC canteen.  
*Tickets £18*



**6 MARCH** 7pm  
BROADWAY CINEMA  
**Carmen**  
**ROYAL OPERA HOUSE**

This ever-popular Bizet opera is given a fresh point of view in Barrie Kosky's highly physical production.  
*Tickets £16*

**10 MARCH** 5.40pm  
BROADWAY CINEMA  
**Semiramide**  
**THE METROPOLITAN OPERA**

Angela Meade makes her MET role debut as the title character in Semiramide. Rossini's opera, which has not been seen at the MET in 25 years, will be conducted by Maurizio Benini and feature Elizabeth DeShong as the Commander of the Assyrian army, Arsace.  
*Tickets £19*

**11 MARCH** 3pm  
BROADWAY THEATRE  
**I Believe In Unicorns**

Olivier Award nominated Wizard Presents brings best-selling children's author Michael Morpurgo's treasured story to life. We challenge you not to believe in unicorns after joining Tomas' spellbinding journey.  
*Tickets £12, Family £44*

**14 MARCH** 7.30pm  
BROADWAY THEATRE  
**Teechers**

John Godber's classic comedy about life at a struggling academy. Crammed full of unforgettable characters, political left-hooks and razor-sharp comedy, Teechers is more relevant today than ever, a modern classic with something vital to say about education for the 'haves' and 'have nots'.  
*Tickets £16, Concessions £14*



**22 MARCH** 6.45pm  
BROADWAY CINEMA  
**Julius Caesar**  
**NATIONAL THEATRE LIVE**

Nicholas Hytner's production will thrust the audience into the street party that greets Caesar's return, the congress that witnesses his murder, the rally that assembles for his funeral and the chaos that explodes in its wake. Starring Ben Whishaw.  
*Tickets £16*

**25 MARCH** 7pm  
BROADWAY THEATRE  
**Dad's Army Radio Hour**

Two actors play 25 characters in this brilliant staging of classic radio scripts based on favourite episodes from the original TV series.  
*Tickets £18, Concessions £16*



**4 APRIL** 7pm  
BROADWAY CINEMA  
**Macbeth**  
**ROYAL OPERA HOUSE**

Verdi's opera on Shakespeare's tragedy is conducted by Antonio Pappano, with a magnificent cast including Anna Netrebko and Zeljko Lucic.  
*Tickets £16*

**9 APRIL** 2.30pm  
BROADWAY THEATRE  
**The Jungle Book**

Immersion Theatre are thrilled to bring their trademark energy to their wildest show yet, a brand new musical adaptation of family favourite, The Jungle Book!  
*Tickets £12, Family £44*

**11 APRIL** 6.45pm  
BROADWAY CINEMA  
**Macbeth**  
**ROYAL SHAKESPEARE COMPANY**

Our contemporary production of Shakespeare's darkest psychological thriller marks both Christopher Eccleston's RSC debut and the return of Niamh Cusack to the Company.  
*Tickets £16*

**14 APRIL** 5.15pm  
BROADWAY CINEMA  
**Luisa Miller**  
**THE METROPOLITAN OPERA**

MET Music Director Emeritus James Levine conducts a revival of Luisa Miller, which has not been seen at the MET since 2006.  
*Tickets £19*

**19 APRIL** 7.30pm  
BROADWAY THEATRE  
**An Evening with Pam Ayres**

Pam Ayres has been making the nation laugh for over 40 years. Her hair-trigger timing, her eye for the absurd details of everyday life, and unforgettable turn of phrase, combine to make her a true national treasure.  
*Tickets £23*

**21 APRIL** 7.30pm  
BROADWAY THEATRE  
**Rich Hall's Hoedown**

Rich Hall's precision dismantling of the tenuous relationship between two countries is as freewheeling and deadly accurate as ever. The Hoedown begins as a withering dissection of Trump's America, but ends up being a celebration of Americana.  
*Tickets £17*

**29 APRIL** 7pm  
BROADWAY THEATRE  
**Si Cranstoun – Twisting The Night Away**

This dynamic show features the powerhouse vocals of retro King Si Cranstoun and his band's blend of Doo Wop, Rock n' Roll and Rocking Rhythm & Blues.  
*Tickets £18*

**3 MAY** 7pm  
BROADWAY CINEMA  
**Manon**  
**ROYAL OPERA HOUSE**

Kenneth MacMillan's powerful telling of Manon and Des Grieux's tragic love is a masterpiece of modern ballet, set to music by Massenet.  
*Tickets £16*

**20 MAY** 3pm  
BROADWAY THEATRE  
**Shakespeare Brought to Life with James Mayhew and Realm of Music**

Be transported back to the sights and sounds of Shakespeare's world through an enchanting afternoon of art and music. Watch the stories unfold on James Mayhew's renowned easel whilst listening to many original tunes from the plays, all performed on an array of lutes, violins, recorders and viols by Realm of Music.  
*Tickets £15, Concessions £12, Family £48*

**25 MAY** 7pm & 9pm  
BROADWAY STUDIO  
**The Last Resort**

An immersive show imagining an alternative future for Guantanamo Bay. The waterboarding has stopped, the noise has been turned down and the military base has been reclaimed as a holiday destination. You, the audience, are our holidaymakers.  
*Tickets £10*

**26 & 27 MAY**  
**Letchworth Food and Drink Festival**

This excellent event returns for another year with a selection of local and regional produce as well as live entertainment for the whole family. Visit [www.loveleetchworth.com/whats-on](http://www.loveleetchworth.com/whats-on)



**12 JUNE** 7pm  
BROADWAY CINEMA  
**Swan Lake**  
**THE ROYAL BALLET**

The Royal Ballet presents a new production of Tchaikovsky's magnificent classical ballet, with additional choreography by Liam Scarlett and designs by John Macfarlane.  
*Tickets £16*

## Over to You



# We need you!

With a move to a new building on the horizon, where many of our community services will be brought together under one roof, we have a great opportunity to review what we offer at the Local & Tourist Information Centre (TIC). We want to ensure that all our services meet the needs of those who use them, whether they are local or visitors from around the world.



# Where do we start?

That's where you come in! We are looking for people of different ages to join us for one or more service design workshops. We will use these sessions to discuss the services we provide at the TIC and identify what improvements could be made or to find out if there are new services we could add to make our offer even better. This will also help our team make decisions about the design of the new community space when we move to the Goldsmith Centre.



# Want to get involved?

Let us know if you would like to get involved by emailing [response@lethworth.com](mailto:response@lethworth.com) or calling **01462 476007**.

We want to have a good mix of ages and backgrounds, so places will be granted on this basis.

### A few words from Heather McLaughlin, Manager of the TIC:

“an interactive, beautifully designed space with services that will benefit everyone...”

“I'm proud that the TIC has become the place for local people and visitors to find out everything they need to know about Letchworth. The move to a new building is an exciting opportunity for us to rethink what our new centre could be. We've been doing lots of research and have plenty of ideas but we want to hear your ideas too so that we really are providing the best possible service: an interactive, beautifully designed space with services that will benefit everyone who comes through the door.”

