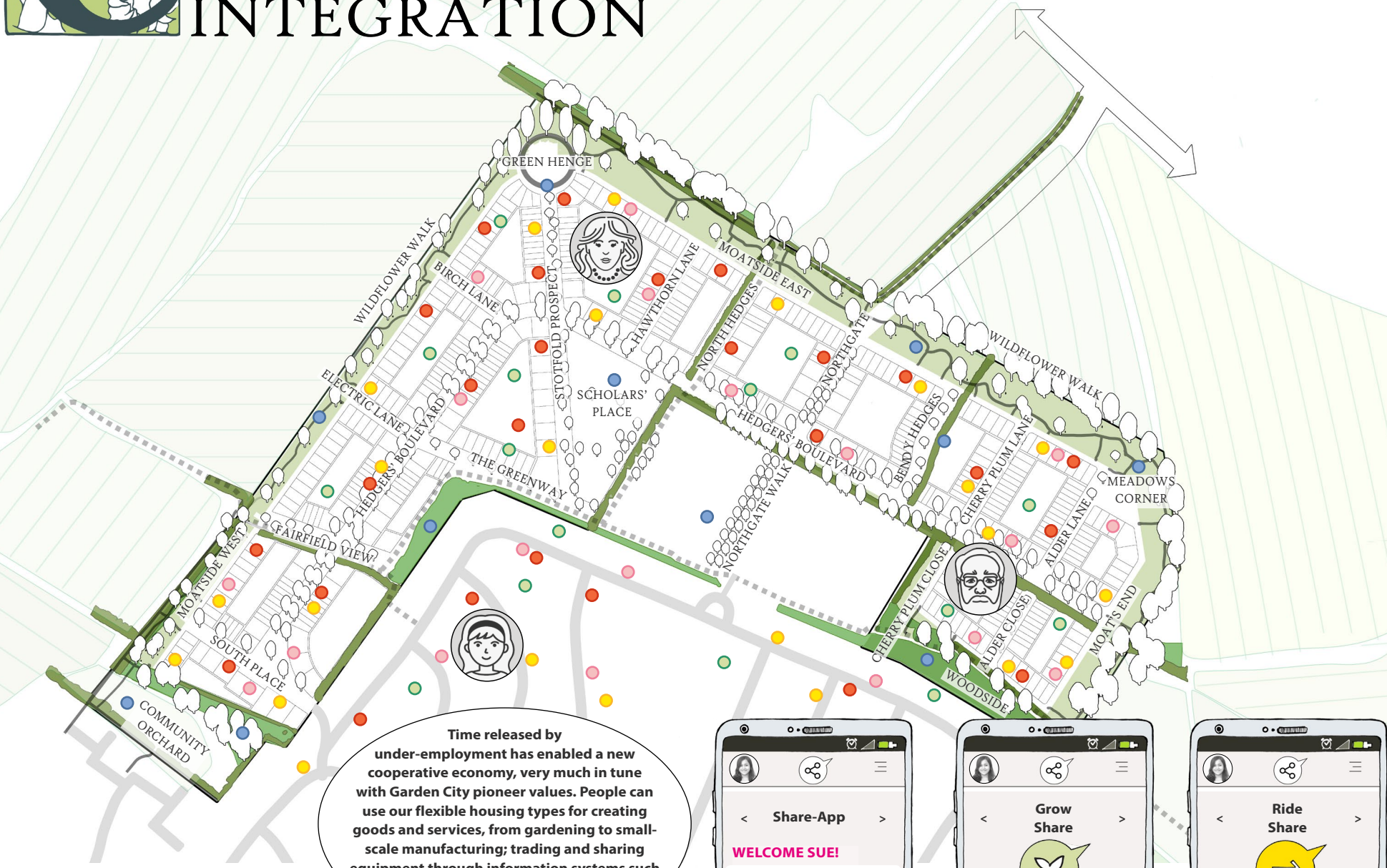


COMMUNITY INTEGRATION

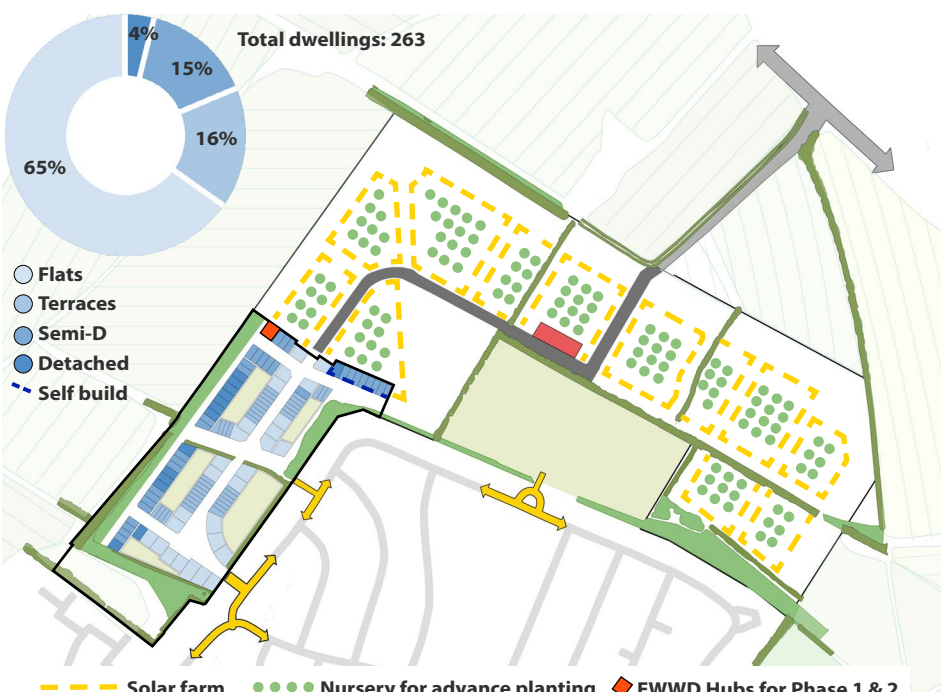


INTEGRATING THE TIME DIMENSION



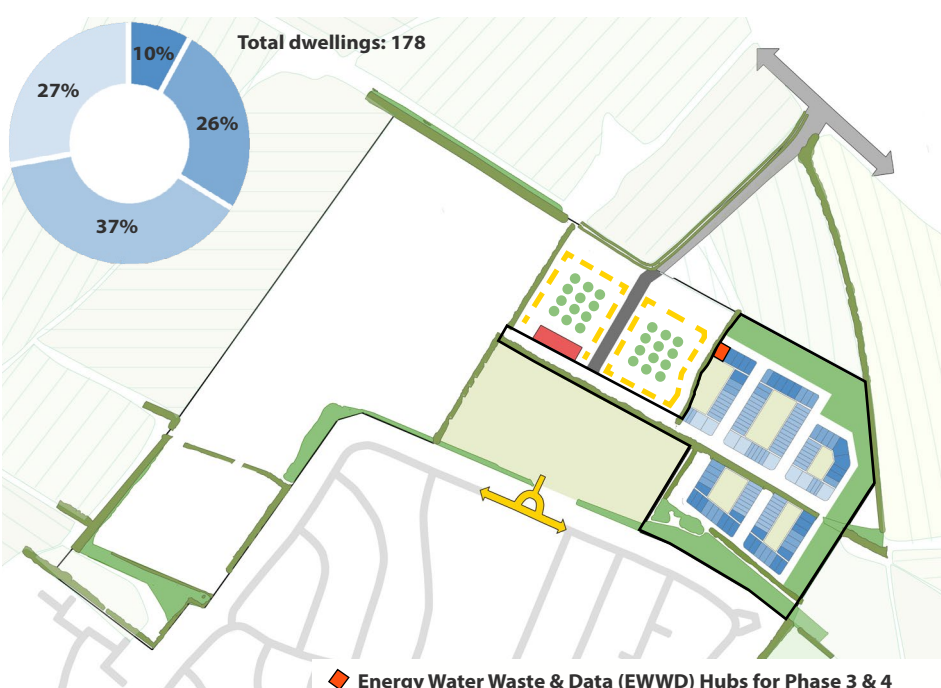
PHASE 0: SET UP PHASE

Our overall phasing strategy is designed to build positive links with Grange Estate residents from the start; by developing the ShareApp to involve a local consultation group and link self-builders with design advice and materials suppliers, prohibiting construction access through the estate and improving recreation ground drainage and new recreational facilities. Self-build starts, and the temporary construction factory offers local employment and training opportunities.



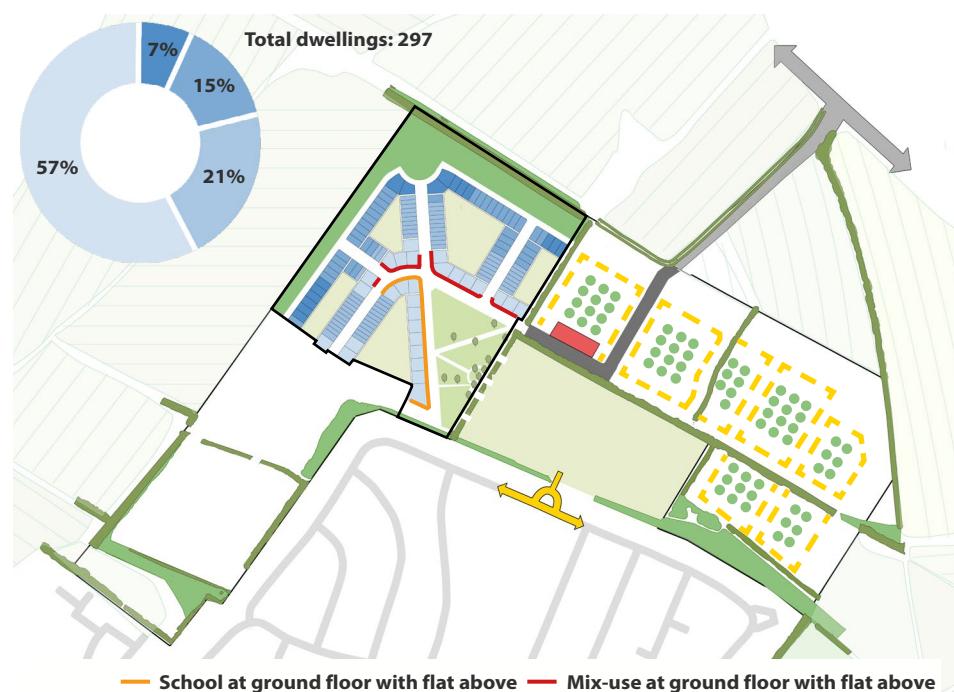
PHASE 1

Building on local people's inputs, development starts at the South West, so Grange-in-the-Hedges forms an integral extension of Letchworth, linked by bus from the start. Grange residents benefit from the extended bus route, and self-build continues in parallel with other development, so that all the dwellings are completed together. Community feedback informs each subsequent phase.



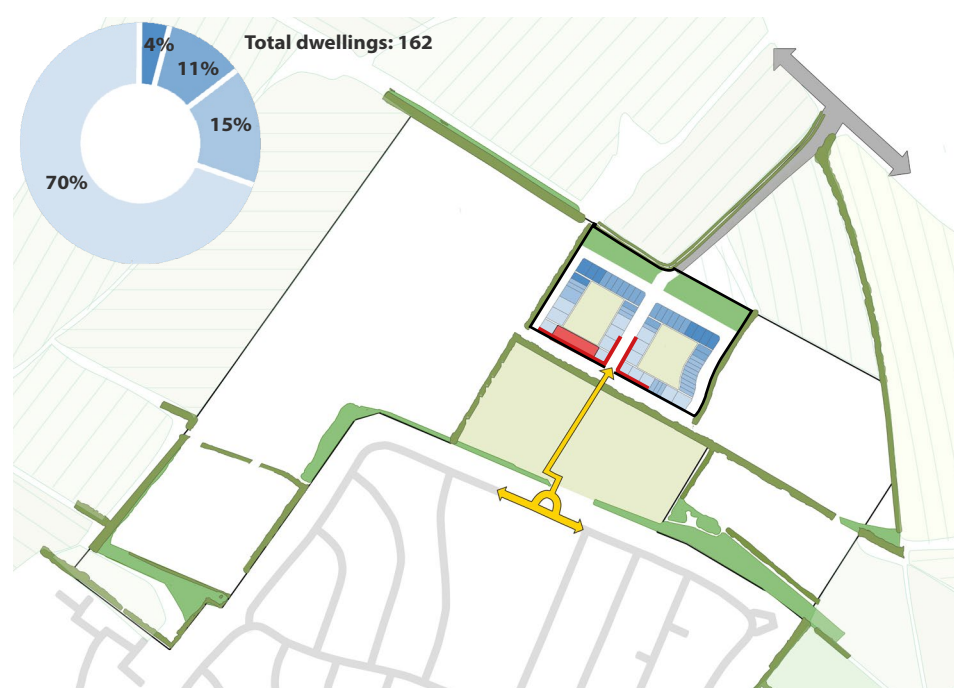
PHASE 3

A short bus or bike-ride from the village centre, people here enjoy Grange-in-the-Hedges' best countryside experience. By now, street planting is beginning to look established, enhancing sales values. Localising information systems to each phase enables incremental delivery of services infrastructure, minimising investment risk throughout. Residents of Grange Estate now benefit from a more frequent bus service.



PHASE 2

By now there are enough new residents to support a village green, the Grange Market, school, doctor's surgery, shops, car club, bike hire and the Green Henge nature space and viewing area: a 'village centre' that also serves the Grange Estate residents. Bringing these social assets on-stream as early as possible creates extra housing value.

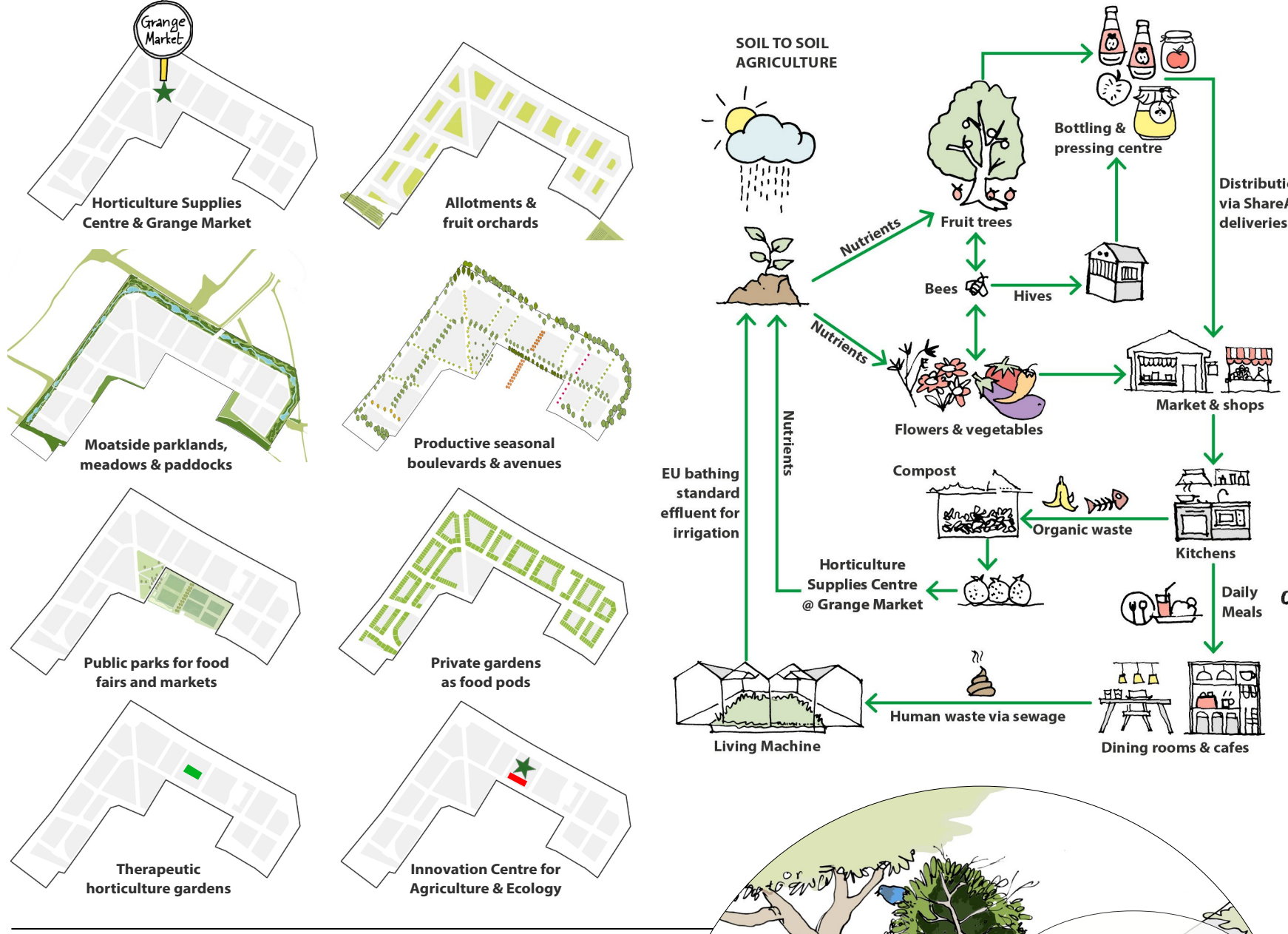


PHASE 4

Still within walking distance of the village centre, this last phase establishes direct access links to the regional road system. The town moat and greenways are now completed, benefitting all Letchworth residents; and the temporary factory becomes community space: we envisage an innovation centre for agriculture and ecology. The ShareApp information system is also well-established, and is expanding to help Letchworth as a whole to move into Tomorrow 2.0.

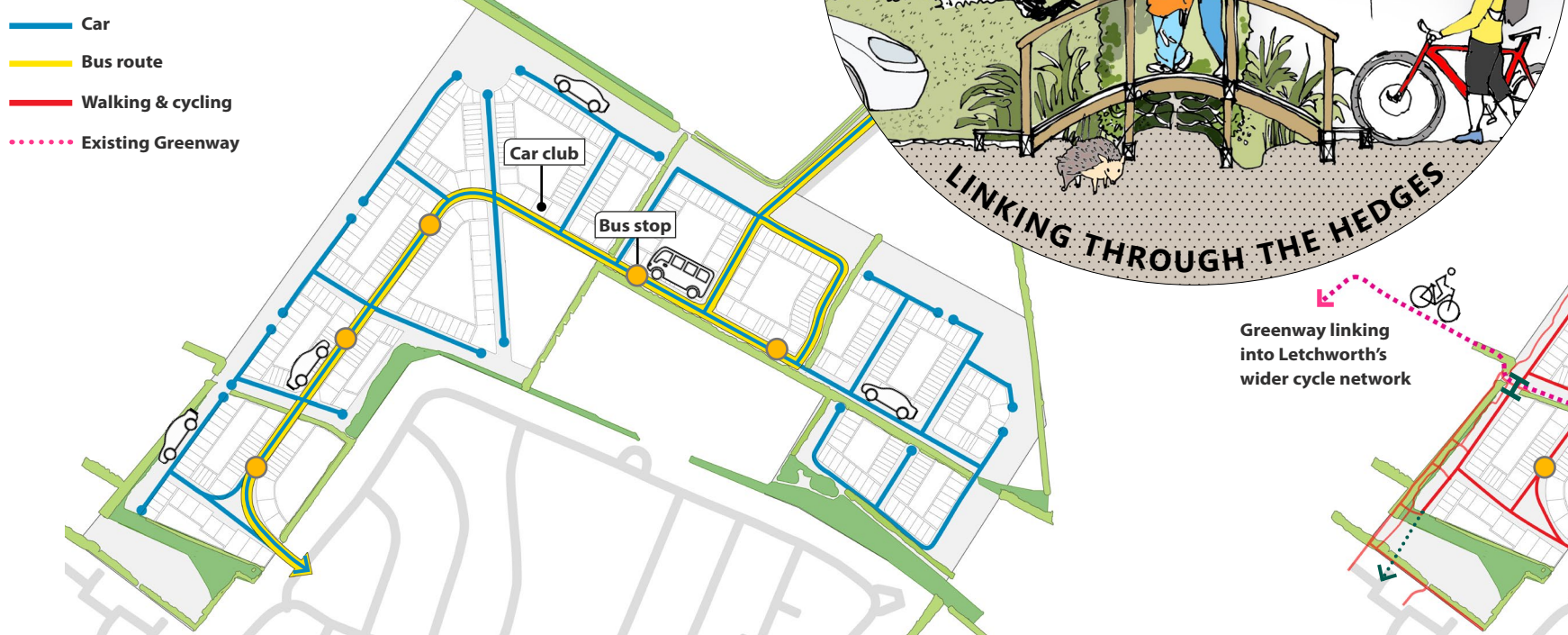
INTEGRATED AGRICULTURE

Urban agriculture system brings together recycled water, soil, bees, plants and trees to produce food for local consumption; then nutrients from composted food waste and human waste are recycled back to the soil. A soil to soil loop is formed.



INTEGRATED MOVEMENT LANDSCAPE

Interwoven streets and hedges create direct routes for pedestrians and cyclists, but form speed-reducing cul de sacs for drivers, creating sales premium that arises from 'private access' ambience. An electric car-club fleet and bike ride-sharing system minimises emissions. Integrating cycle hire points with bus stops (within 5min walk of all plots) extends the reach of public transport.

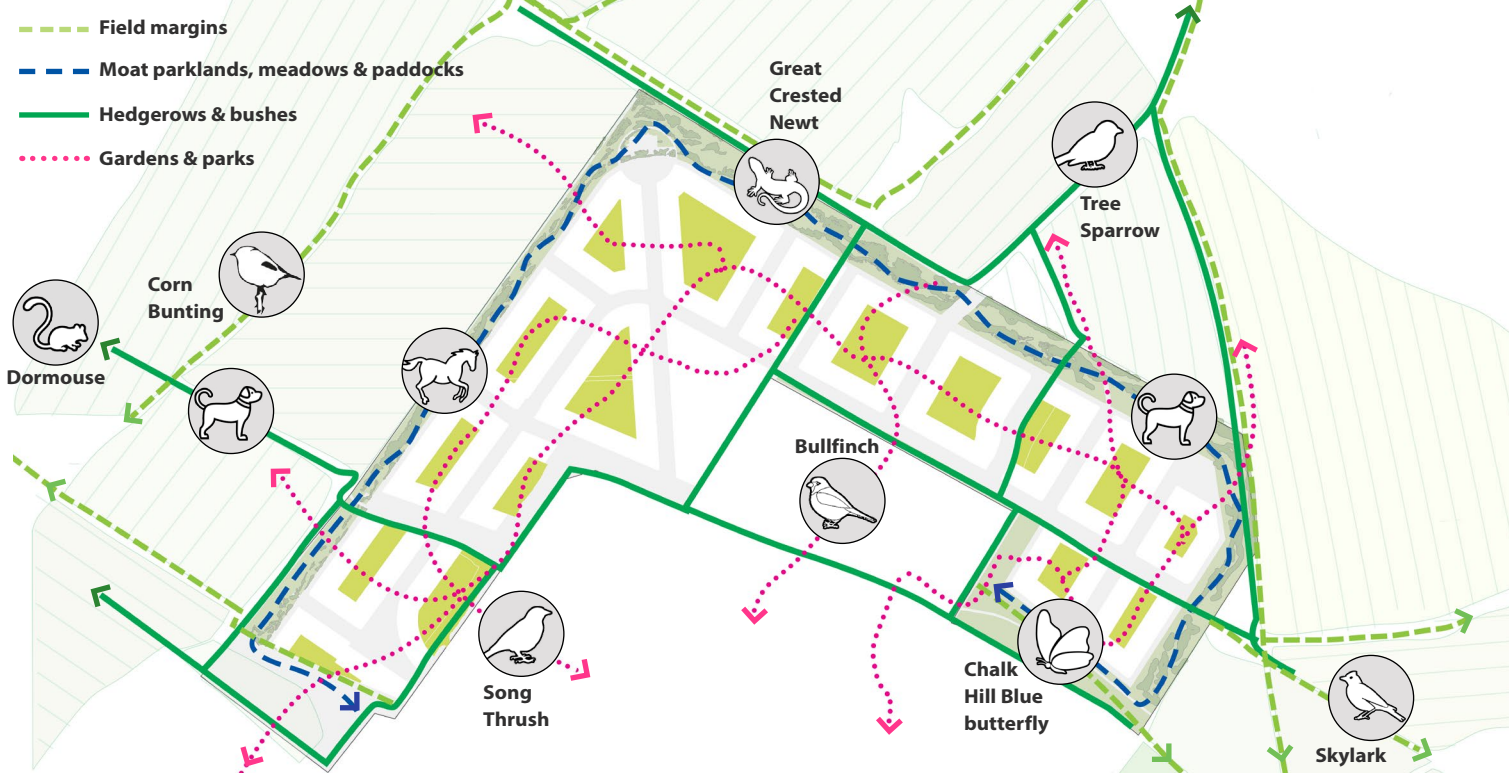


GETTING TO UNDERSTAND WATER: LIFE IN THE LIVING MACHINE



INTEGRATED WILDLIFE RECOVERY NETWORKS

Field margins, hedgerows, allotments, gardens, woodlands and parklands all become part of daily routes, nesting, mating and foraging areas for a range of local species contributing to the Wildlife Recovery Network.



INTEGRATED INFRASTRUCTURE & INFORMATION SYSTEMS

The systems of water supply and recycling, solar electricity generation and distribution, waste-composting, data sharing, ride-sharing and the hiring of cycles and cars are all integrated and controlled across scales through information and communication technology for the benefit of the residents.

