

Growing together_a productive Framework

URN_C_A1 sheet 02

Re-Imagining The Garden City



The Wild Buffer - Detached



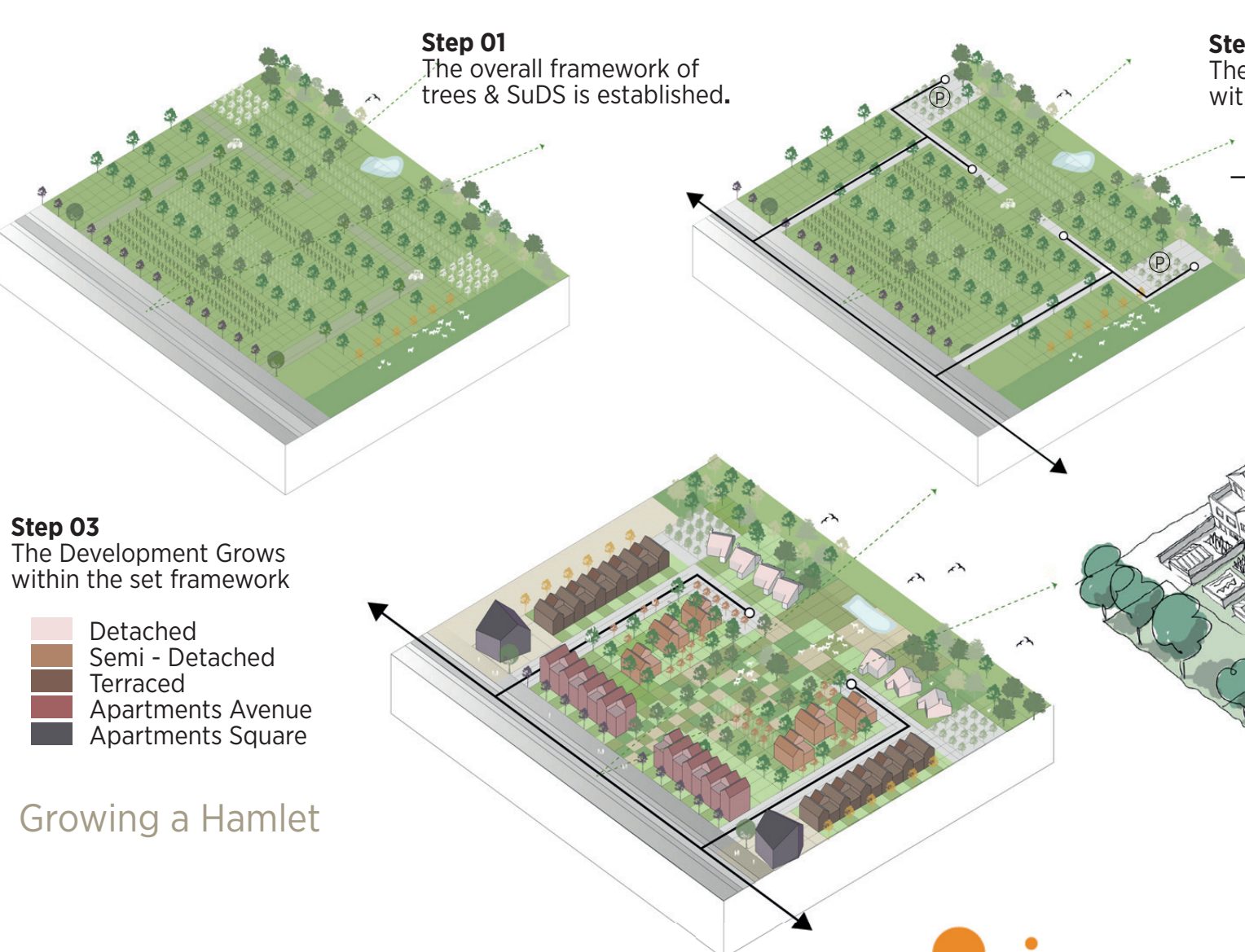
The Common - Semi- Detached



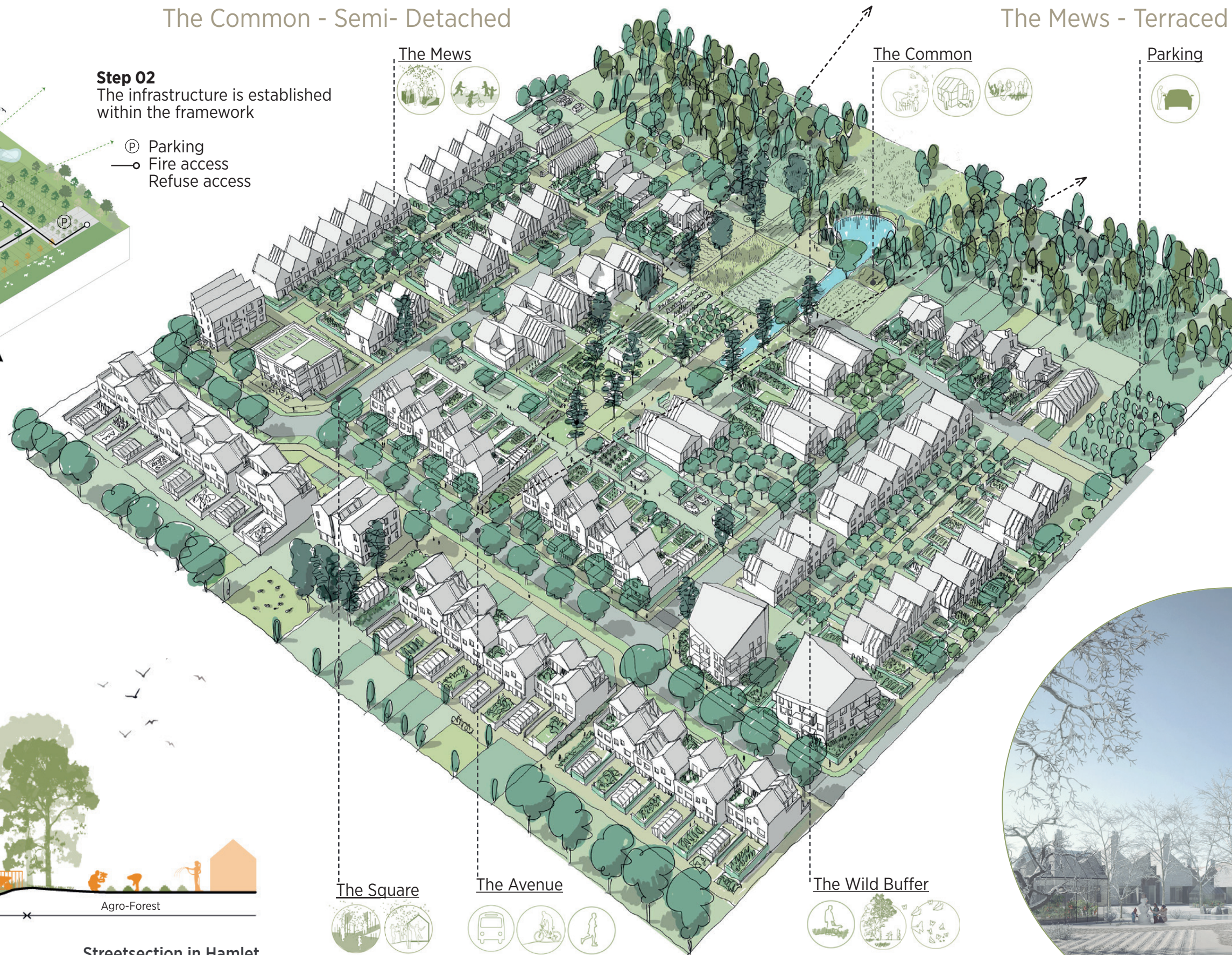
The Mews - Terraced



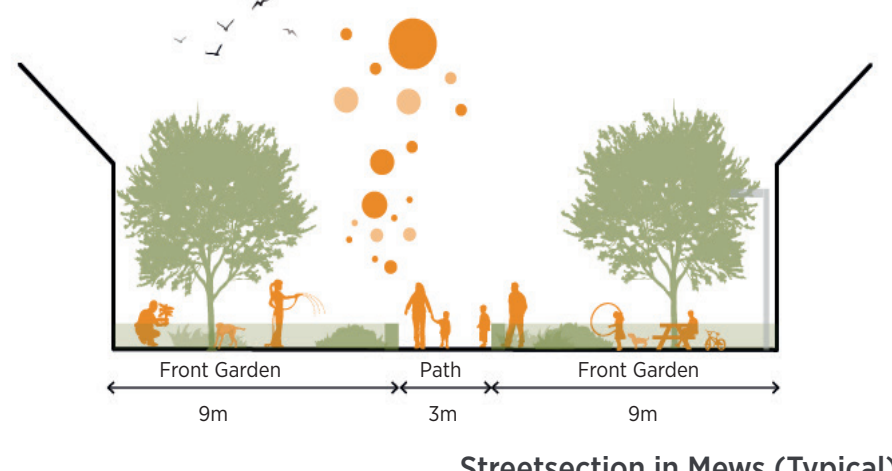
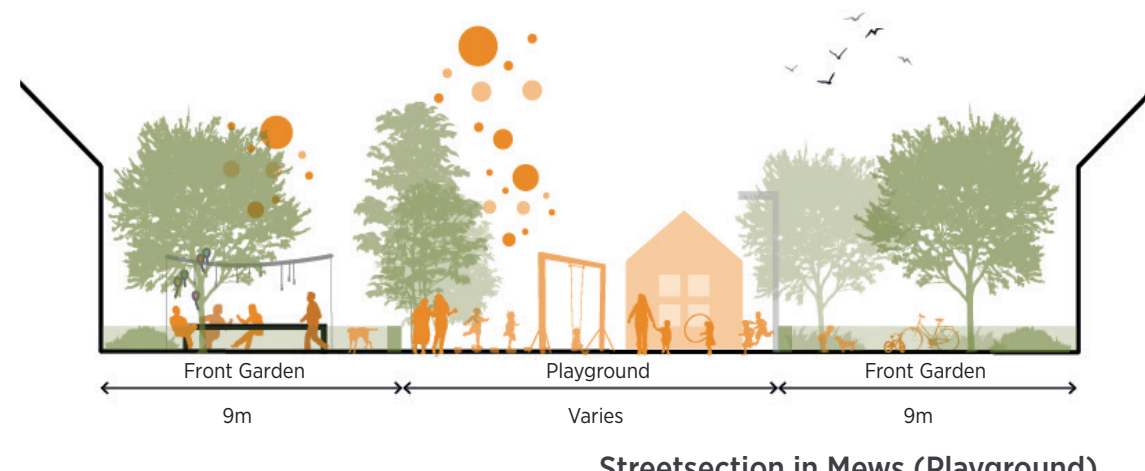
The Avenue - Apartments



Growing a Hamlet



Close Connection
Experience the landscape - winter in the Hamlet.



Growing a Hamlet Typologies & Agroforestry



The Close Connection

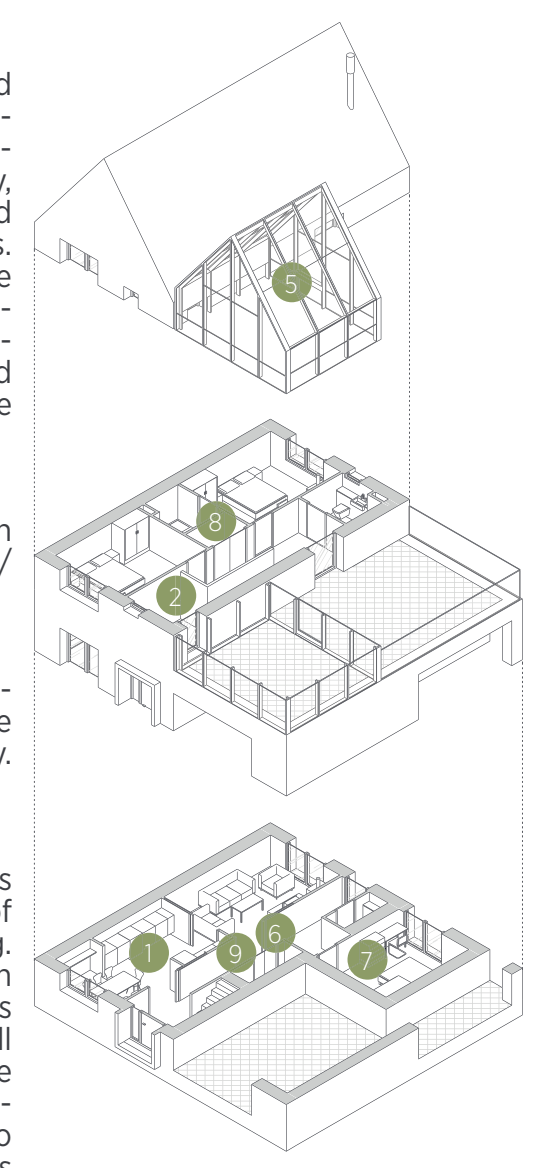
Raw & Craft
natural, adaptable, resilient, affordable.

Raw & Craft is a house-making philosophy and applied practical methodology. The aim is to produce typologies of comparatively simple, adaptable buildings that are excellent value for money, will stand the test of time and can be customised to suit the needs and tastes of different households. The foundations, elemental structure and roof are strong and built to last. The aim is to produce typologies of comparatively simple, adaptable buildings that are excellent value for money, will stand the test of time and can be customised to suit the needs and tastes of different households.

Raw
The 'raw' materials should aim to be of a high enough quality to leave in a raw condition; owners/occupiers can finish them if they wish.

Craft
'Craft' refers to the hand-made or particularly artful fabrication and finishes of areas ... a floor, the front door, a key window or a hearth and chimney.

Resilience and adaptability
The focus for the proposed housing typologies has been to design in the capacity for change, for ease of maintenance and for durability - simple and strong. Entrance halls are generous and double height with a view of the garden to the rear. The internal layouts are simple and broken plan; bedrooms are small; all with good storage options. The typologies come supplied with options for changing and even growing over time. In-built garages can be converted to an additional bedroom or study. Winter gardens and roof terraces can likewise be converted or added over time.



- A Natural Home**
- Qualities of natural finishes enhanced for a healthy atmosphere.
 - Generous floor to ceiling and large windows for ample daylight throughout the home including a double height entrance hall.
- An Efficient home**
- A 'fabric first' approach to minimize energy in use.
 - Solar gain and thermal mass used to regulate temperatures throughout the year.
 - Passive heating through winter gardens.
 - Provision for fuel cell technologies and ground source heat to provide decentralized heat and power.
- A Practical Home**
- Layout and circulation which enables rooms to be converted and new rooms added.
 - Provision to built-in storage throughout the home.
- A Smart Home**
- Central hub for control from smartphone at home or away. Motion sensors to trigger lighting and heating.

