

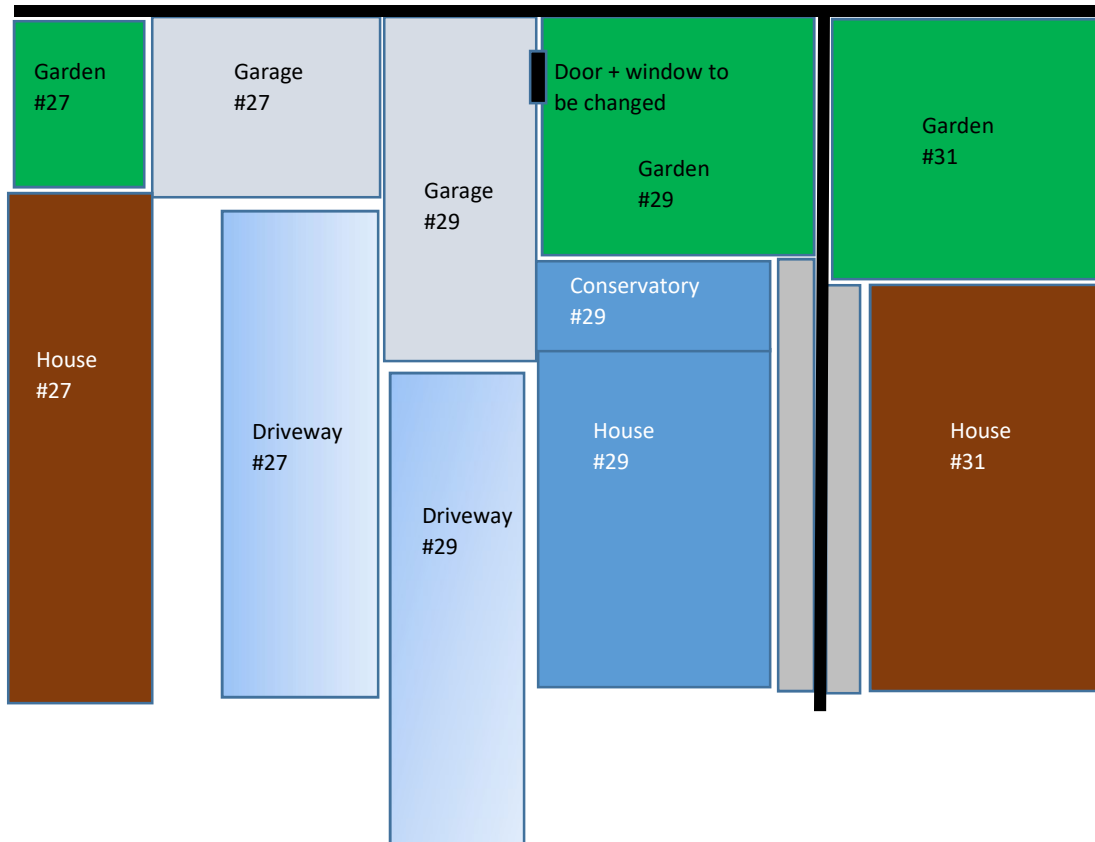
29 Bell Acre, context for drawings:

Overview of garage location: view from the street for context



Aerial view (*not to scale, for context)

Fencing – thick black lines



Submission, garage work: 29 Bell Acre, SG6 2BS

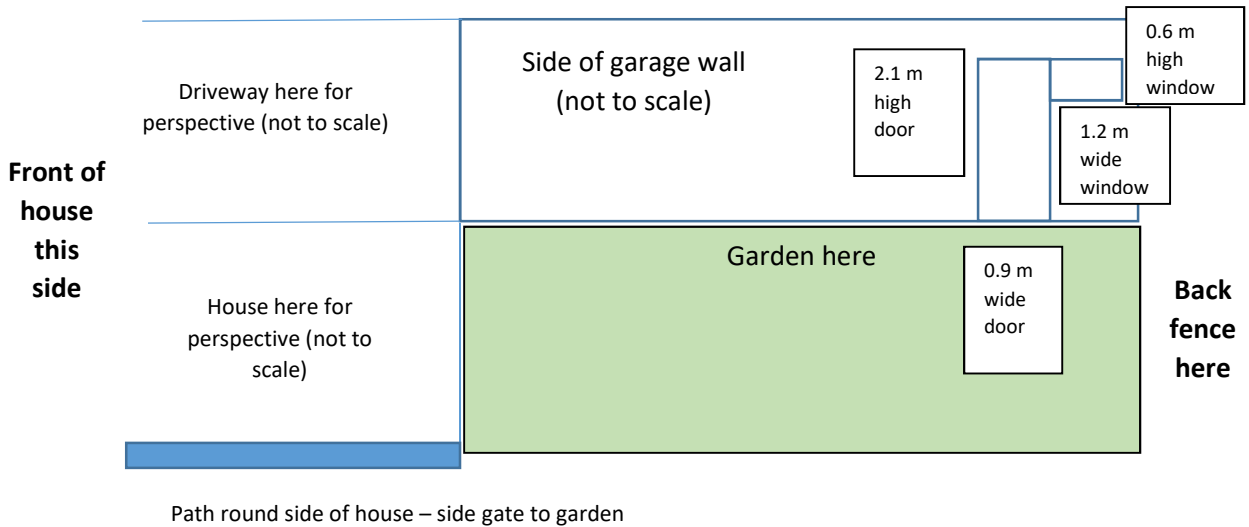
July 2022

Summary of the work impacting external portion of the garage:

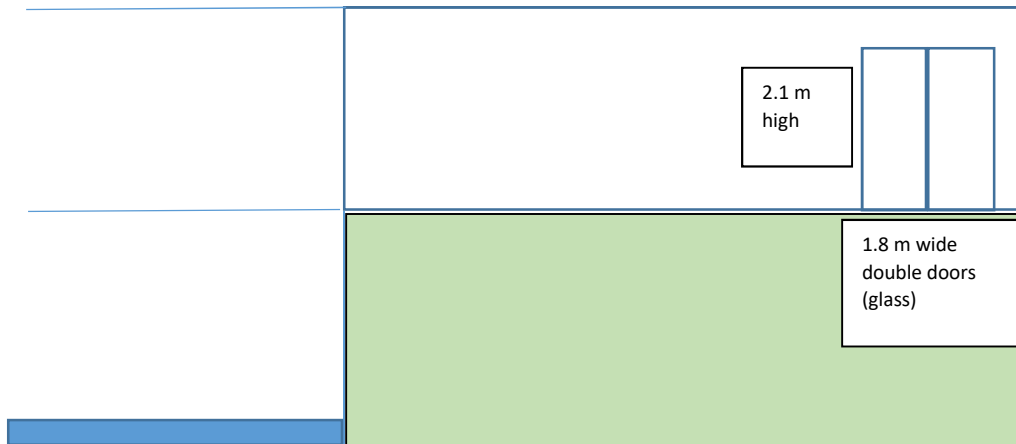
- **#1:** Changing current single width door + high, wide window at the right, back of the garage, opening into the rear garden to double doors (see dimensions below) – change only visible from enclosed garden
- **#2:** Adding insulation above the current garage roof in back ~60% of garage, and re-roofing with felt consistent with front part of garage (remaining unchanged), and addition of 2 rooflights
 - remove current felt finish and add roof insulation on top of existing roof structure (120 mm PIR insulation) then finish with 18 mm OSB on top of insulation before refinishing 60% consistent with existing felt
 - Add 2 x double glazed flat aluminium roof lights (1000 mm x 1000 mm)

Change #1

EXISTING:



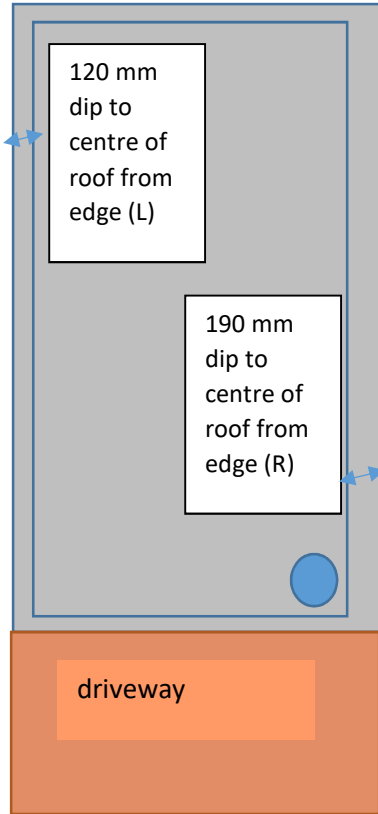
TO:



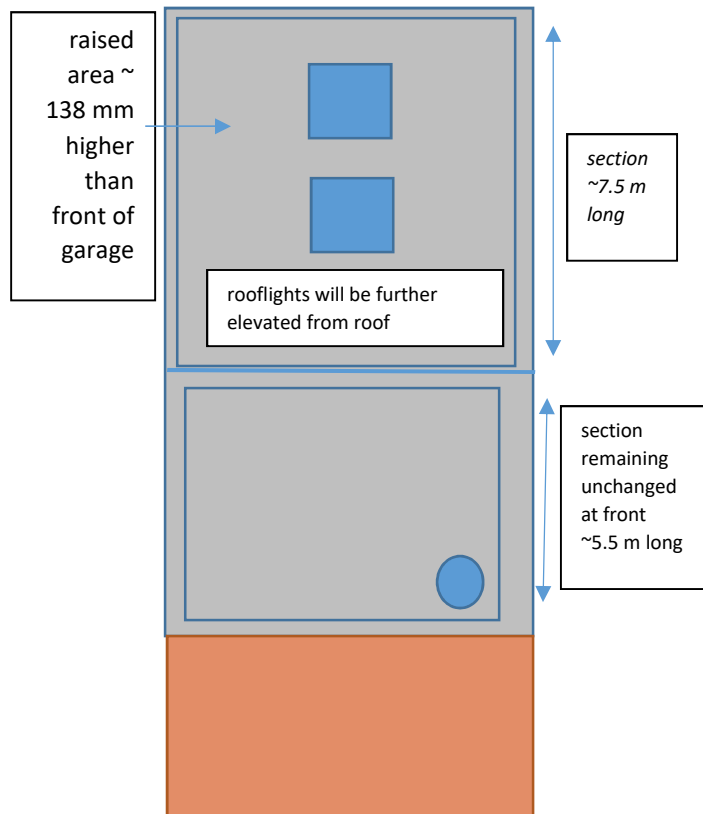
Change #2

Aerial view of garage:

EXISTING:



TO:



View looking from the front of the house down the driveway (existing white garage door will remain unchanged)

